

*Championing Education
for Broward's Children*



Mission and Vision



Our Mission:

Broward Education Foundation's mission is to energize and engage the extended community to transform the lives of Broward County Public School students through the support of quality education.



Our Vision:

Broward Education Foundation envisions a community where all Broward County Public School students can achieve his or her highest potential.

Letter from Board Chair and Executive Director

Dear Friends,

Every child needs a champion. YOU – our donors, business and community leaders, and educators – are champions for endeavoring to provide each child in Broward County with exceptional educational opportunities every day with us.

Your support drastically improves educators' abilities to connect with and develop the potential in our students. Your support insures students from PreK-12 will have the basic tools they need to succeed in school and it guarantees that many graduating seniors who lack personal or financial support can achieve success as they continue their educational journey. These opportunities for our children would not be possible without the generosity, time and commitment from you, our community stakeholders.

Together with Broward Education Foundation, you are helping to shape and mold the future of Broward County. Our results speak volumes – our schools, teachers and students excel because we have an engaged community that is willing to devote time and money in our children's education and future.

On behalf of the students and educators we collectively serve throughout the year, thank you for championing education for Broward County's young people.

Sincerely,



Christina Fischer
*Chair of the
Board of Directors*



Shea Ciriago
Executive Director




Christina Fischer, *Board Chair*



Shea Ciriago, *Executive Director*

Looking Back

HOW BROWARD EDUCATION FOUNDATION BEGAN



In the fall of 1983, community activists Selma Hopen, Dr. Linda Murray and Dr. Dorothy Orr and Bertha Smolian created a program to support Broward County Public Schools called “Total Child.” Their success led Superintendent of Schools Dr. William McFatter to recommend that this group of dedicated women operate as the Broward County School Board’s affiliated 501(c)(3) foundation. His motion carried and Broward Community Education Foundation was officially chartered in August 1984.

In 1985, the Foundation awarded twenty teacher mini-grants to teachers for classroom projects and by 1989, held the first of many scholarship fundraising events. The Broward Advisors for Continuing Education or BRACE Scholarship Program was established to provide scholarships to students who had exhausted all avenues for financial aid and still fell short of funds needed to pursue a postsecondary education.

As support for the Foundation widened, so too did the number of impacted teachers and students. In the ensuing years, the Teacher Mini-Grant Program was expanded to include the Citibank Success Fund and IMPACT II, a national program designed to recognize and reward innovative teachers.

In April 1990, the name of the Foundation was changed to Broward Education Foundation, Inc., and in May of that same year, the Foundation became a Direct Support Organization of the School Board of Broward County.

As the millennium dawned, Broward Education Foundation continued to grow to meet the needs of the community by expanding its fundraising, advocacy and programs for Broward County Public Schools’ students in need, especially those in economically disadvantaged areas.

In 2001, the Foundation launched an initiative for students lacking basic school supplies called Tools for Schools Broward. Teachers from throughout Broward County traveled to “shop” for free school supplies to equip their students with the necessary tools for learning. What began as a small storefront located at Fort Lauderdale High School, Tools for Schools Broward Center now occupies its own 8,000 square foot store/warehouse.

Today, Broward Education Foundation is governed by a thirty member Board of Directors, with ten working committees and an annual operating budget of \$3.2M. In 2016-17, nearly \$164,000 Innovative Teacher grants were distributed to encourage emerging quality curriculum; 201 students received



scholarships totaling more than \$800,000 and students from economically challenged families received in excess of \$1.5 million in donated school supplies. In addition, the Foundation is the fiduciary agent for more than 200 funds set up by individuals and groups who recognize and support quality education.

Broward Education Foundation is proud to serve as a catalyst for educational excellence and provide support for Broward County Public Schools.



BEF EXECUTIVE DIRECTORS:

Ruthe Lowy

Kim English

Kim Bentley

Michael Long

Jorene Jameson

Thomas Paul Severino

Shea Cirago



Fostering Innovative Teachers



Broward Education Foundation fosters Innovative Teachers in the District by providing them with the opportunity to implement and enhance creative and engaging educational experiences for students.

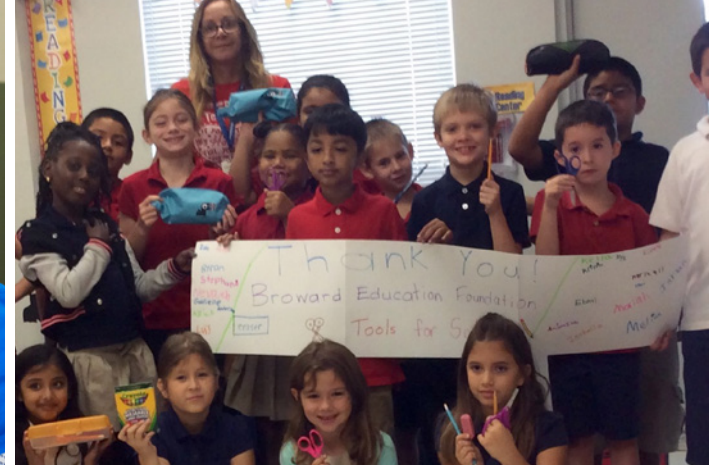
With a multi-faceted PreK-12 “best practices” model, Innovative Teachers are recognized for their ingenuity, their classrooms benefit from additional grant funding and their peers replicate, enhance and build upon proven methods of academic achievement.

Innovative Teacher grant-winning projects funded through the Foundation instill enthusiasm for learning in our children, improve their grasp of the curriculum and ultimately, increase the likelihood they will stay in school.

Broward Education Foundation awarded 268 grants to creative teachers in Broward County Public Schools in 2016-17, allocated more than \$164,000 supporting Pre-K-12 achievement and impacted nearly 27,000 students.

IT IS THE SUPREME ART OF THE
TEACHER TO AWAKEN JOY IN CREATIVE
EXPRESSION AND KNOWLEDGE.

– Albert Einstein



“Receiving a teacher grant from Broward Education Foundation allows me to bring a new dimension of learning to my students. It's vitally important to keep students focused and implementing a new creative project amplifies their learning outcomes significantly.”

~ Tara Dukanauskas, Teacher, North Andrews Gardens Elementary School

“Giving back to the local communities we serve is part of our DNA at Lucky's Markets. Education is something we are passionate about and we are thrilled to partner with Broward Education Foundation for their inspiring initiatives.”

~ Andrew Smith, Lucky's Market Store Director.

“For ten years, the City of Hollywood Education Advisory Committee has proudly partnered with the Broward Education Foundation to help provide grant funding to Hollywood teachers for original and innovative educational projects. Hollywood is committed to providing the highest quality education for all students and our work with the foundation has helped enhance the learning experience.”

~ City of Hollywood Mayor Josh Levy



Equipping Students for Success



Notebook paper. Pencils. Crayons. Backpacks. Broward Education Foundation's Tools for Schools Broward Center provides free school supplies for students in need. In 2016-17, Broward Education Foundation's "Back-to-School" Supply drive nearly doubled the prior year's participating businesses and organizations – 130 companies held drives to benefit Broward students and teachers.

Children served by Tools for Schools Broward lack even the basic school supplies that many take for granted. Through a collaborative partnership with Kids in Need Foundation and tremendous support from business and community leaders, educators in schools serving a high-percentage of economically disadvantaged students shop free for students and classrooms.

Broward Education Foundation endeavors to equip all students in Broward County Public Schools for success.





EDUCATION IS NOT THE
FILLING OF A PAIL, BUT
THE LIGHTING OF A FIRE.

— William Butler Yeats



“The Kids In Need Foundation has been fortunate to have worked with Broward Education Foundation for 16 years. We’ve received tremendous support from Tools for Schools to further our mission of providing free school supplies to students most in need through their distribution of supplies to Broward County kids and teachers.”

—Dave Smith, Kids In Need Foundation Executive Director

“Since 2013, Thirty-One Gives has been a proud partner with the Kids in Need Foundation Teacher Resource Centers and has donated more than \$14 million in product. At Thirty-One Gifts, giving is part of who we are. That’s why we created Thirty-One Gives, a charitable program that works to empower girls, women and families to build the confidence and self-esteem needed to live a purposeful, thriving life.”

—Cherie Rodriguez, Thirty-One Gives

Stewarding Scholarships



As many Broward County children look to their future, college can seem a distant dream. But with help from Broward Education Foundation, a post-secondary education becomes a reality.

Scholarships awarded to qualified graduating students in Broward County Public Schools through Broward Education Foundation are primarily based on need, as well as on merit and academic achievement.

Students pursuing a university, college or vocational education receive scholarships ranging from \$500 to a four-year scholarship thanks to Florida Prepaid College Foundation and generous donors.

Since 1985, Broward Education Foundation has awarded more than 5,200 student scholarships valued at nearly \$12,000,000. Many student scholarship recipients are the first in their family to attend college.

2016/2017 SCHOLARSHIP PROGRAM

In 2016-17, 202 graduating seniors were awarded Florida Prepaid scholarships and monetary awards valued at more than \$800,000 through Broward Education Foundation.



WHEN WE GIVE CHEERFULLY
AND ACCEPT GRATEFULLY,
EVERYONE IS BLESSED.

—Maya Angelou



“The Sprouting Scholar Award is a privately funded scholarship given to individuals who have begun life with more financial and economical disadvantages than most. The intention of this scholarship is to show our community that anyone can become a conduit of hope. We believe that if the average person realized their potential to make a difference, more lives would be impacted and changed!”

—Amber & Jamal Davenport, Donors

“This scholarship helped ease the financial pressures of school and allowed me to place all my focus on becoming the best student I can be. Thank you for your financial support, which is very much appreciated, and know that it will not be wasted. I have been working hard to make sure that you feel that you have made a wise decision in selecting me as one of your recipients. Again, thank you for your generosity.”

—Diana Francine Constant,
Scholarship Recipient



Placing Education First

Employees in Broward County Public Schools know that students depend on them, both directly and indirectly. Broward Education Foundation's annual Education First Employee Giving Campaign strongly reinforces the District's commitment and dedication to quality education.

In 2016-17, more than 4,500 employees contributed to Education First via payroll deduction and raised nearly \$200,000. Employees contributing to Broward Education Foundation play a vital role in serving students and teachers and are placing Education First.

YOUR WORK IS TO
DISCOVER YOUR WORK
AND THEN WITH ALL
YOUR HEART TO GIVE
YOURSELF TO IT.

— Buddha

Through the Education First Employee Giving Campaign, the following Broward County Public Schools departments and schools earned the privilege of naming a scholarship for a deserving high school senior:

Atlantic Technical College

Broward County Public Schools Bilingual/ESOL

Dania Beach Elementary School

Eagle Point Elementary School

Broward County Public Schools Food & Nutrition Services

Henry D. Perry Education Center

Larkdale Elementary School Oriole Elementary School

Broward County Public Schools Personnel Records

Sawgrass Springs Middle School

School Board of Broward County

Broward County Public Schools Student Services

Broward County Public Schools Title I, Migrant & Special Programs

Village Elementary School

West Pine Middle School



“I give to Broward Education Foundation’s Education First Employee Giving Campaign because they believe in giving back! Teachers benefit by writing grants to fund innovative ideas for their classrooms, which in turn benefits their students! I have personally received over 15 grants in the last 20 years. Another reason to support the foundation is the wonderful Tools for Schools store that many teachers in the county can shop at. This really helps to offset the expenses incurred in the classroom. The third reason is that high school students can get college scholarships from the foundation. These deserving students might not be able to afford college without these scholarships. I know that all donations are going right back into education!”

—Debra Fischer, Castle Hill Elementary

“There is no greater gift than giving.”

—Richard Rothberg, BCPS Transportation Services



“I believe we are blessed when we are a blessing to others. I support Education First so others will benefit from my giving.”

—Dr. Warren Brown, HD Perry Education Center, Winner of Education First Incentive 3-Year Car Lease courtesy of Anthony Damato, Toyota VIP Sales Manager.



Celebrating Educational Excellence in Black and White

On April 22, business and community leaders, donors and supporters gathered to celebrate 34 years of public school educational excellence at Broward Education Foundation's Black & White Gala presented by BrightStar Credit Union.

For their considerable impact on public education and student achievement in Broward County Public Schools, Arthur J. Gallagher & Co. and Memorial Healthcare System were honored, and were pleased to present named scholarships to two deserving high school seniors.

The elegant celebration underscored the vital importance of community support for underserved students through Broward Education Foundation.





2017 BLACK & WHITE GALA SPONSORS



Shining A Light On Alumni – 2016 Hall of Fame Awards



Graduates of Broward County Public Schools excel – in both the community and in education – and Broward Education Foundation’s 2016 Hall of Fame Awards placed these exemplary individuals in the spotlight as community role models.

George Platt

Ft. Lauderdale High School '62

2016 Lifetime Achievement Award

2016 Education Achievement Awards

Olayemi Awofadeju – Plantation High School '95

Roderick “Rocky” Gillis – Pompano Beach High School '78

Angel Gomez – Western High School '87

2016 Community Achievement Awards

Nancy Botero – Northeast High School '77

Ulrich “Ric” Green – Pompano Beach High School '73

George LeMieux – Coral Springs High School '87



Enhancing Educational Experiences & Promoting Student Achievement

2016-17 INNOVATIVE TEACHING GRANTS:

- 268 BCPS Educators Received Innovative Teacher Grants
- \$164,399 Total Amount of Grants Distributed
- 26,333 PreK-12 Students Directly Impacted

2016-17 EDUCATION FIRST CAMPAIGN:

- \$195,000 Contributed By Employees 4, 500 Participating Employees
- \$27,000 Total Leadership (\$500+) Gifts
- 19 Scholarships Funded, Programs and Initiatives Increased.

2016-17 TOOLS FOR SCHOOLS BROWARD:

- 3,308 Teachers Shopped Free
- \$465 Average Value of School Supplies Received
- \$1,534,153 Total Value of Supplies Distributed 100,000+ Students Impacted

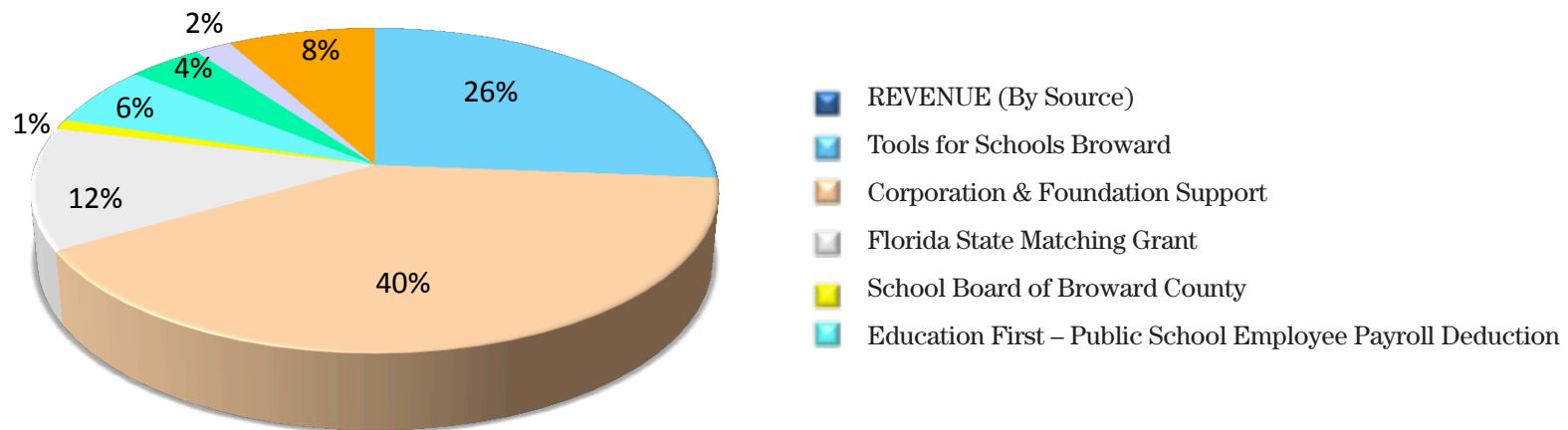
2016-17 SCHOLARSHIP PROGRAM:

- 202 Students Awarded Florida Prepaid Scholarships and Cash Awards
- \$800,000 Total Scholarship Value Awarded 1,500+ BCPS Students Applied For Scholarships

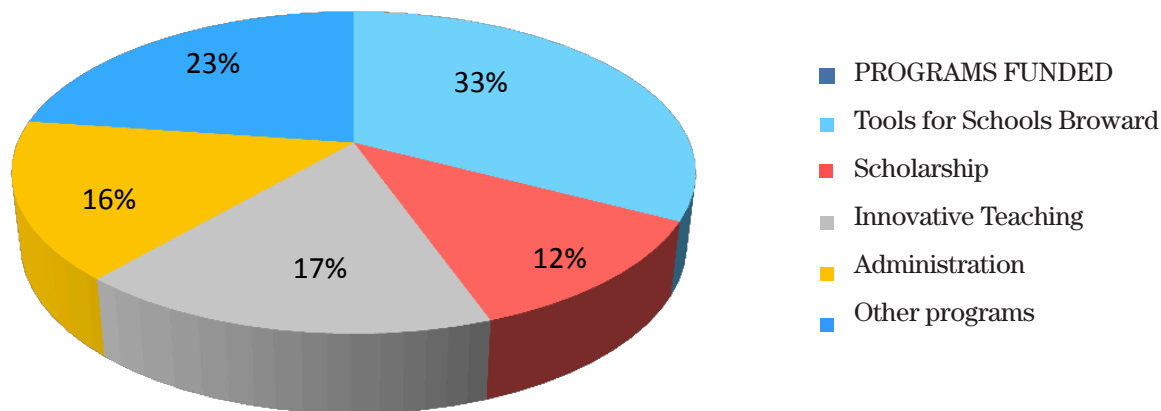


Enhancing Educational Experiences –By the Numbers

Fiscal Year Ending June 30	2017	%	2,016
REVENUE (By Source)			
Tools for Schools Broward	835,946	26%	1,034,359
Corporation & Foundation Support	1,287,492	40%	1,147,462
Florida State Matching Grant	381,219	12%	382,485
School Board of Broward County	38,576	1%	263,163
Education First- Public School Employee Payroll Deduction	204,153	6%	178,689
Individual Contributions	118,236	4%	103,278
Administrative Fees	73,430	2%	68,424
Investment Earning	267,588	8%	(21,173)
Total Revenue:	3,206,640		3,156,687



PROGRAMS FUNDED	2017	%	2,016
Tools for Schools Broward	1,147,787	33%	1,334,842
Scholarship	432,368	12%	696,968
Innovative Teaching	590,708	17%	515,449
Administration	552,756	16%	383,690
Other programs	804,672	23%	361,448
Total Expenses:	3,530,308		3,294,413



REVENUE (By Source)	2017	%
Tools for Schools Broward	835,946	26%
Corporation & Foundation Support	1,287,492	40%
Florida State Matching Grant	381,219	12%
School Board of Broward County	38,576	1%
Education First- Public School Employee Payroll Deduction	204,153	6%
Individual Contributions	118,236	4%
Administrative Fees	73,430	2%
Investment Earning	267,588	8%

Giving Circle



FOUNDER'S CIRCLE – \$100,000 AND ABOVE

Broward County Public Schools
Education First
Employee Giving Campaign
Community Foundation of
Broward
Florida Education Foundation
Matching Grant
Florida Prepaid College
Foundation
JPMorgan Chase Foundation

PRESIDENT'S CIRCLE – \$50,000-\$99,999

BrightStar Credit Union
Broward County School Board
State of Florida – License for
Learning
Target Corporation
Wells Fargo

DIAMOND CIRCLE – \$25,000-\$49,999

City of Pompano Beach
Estate of John L. French/Gail, Rob
& Jennifer Cox
Future Teachers of America
JM Family Enterprises, Inc.
PNC Bank

PLATINUM CIRCLE – \$10,000-\$24,999

Alan & Marjorie Methelis
Amaturo Family Foundation, Inc.
Arthur J. Gallagher Risk
Management Services
BMG Money, Inc
Brown Capital Management, LLC
Childrens Services Council of
Broward

City of Hollywood
City of Sunrise
Dr. and Mrs. Harold Cohen
Drs. Subhash and Vasanti Puranik
Ford Motor Company
Fort Lauderdale Country Club
Holy Cross Hospital
JDL Technologies, Inc.
Marlins Foundation
Martin and Pamela Steinik
Matthew B. Nobles
Max & Victoria Dreyfus
Foundation, Inc.
Publix Super Markets Charities
Rotary Club of Weston
Sistrunk Historical Festival, Inc.
The Batchelor Foundation, Inc.
The Links, Incorporated

GOLD CIRCLE – \$5,000-\$9,999

Aetna/Coventry Health Care
of Florida
Amscot
AT&T
AXA Equitable Life Insurance
Company
Bank of America
Charter Schools of Excellence
City of Hallandale Beach
Cruise Industry Charitable
Foundation
Education Technology Services
Houghton Mifflin Harcourt
Intel
Michael Mitchell
Motorola Solutions Foundation
Mr. and Mrs. Conrad Timpf
OneBlood, Inc.
Rathmann Family Foundation
Sprayregen Family Foundation,
Inc.

State Farm Insurance
The GEO Group Broward
Transitional Center
TSA Consulting Group, Inc
University of Phoenix

SILVER CIRCLE – \$1,000-\$4,999

Akilah Sherlece Brady
Alan and Marsha Levy
Ann Murray
Anne McDougall
Anthony T. Lawton
Arthur J. Gallagher Benefit
Services
Avaya
BBX Capital Foundation, Inc.
Becker & Poliakoff, P.A.
Boies Schiler & Flexner LLP
Brian Dassler
Brian Sullivan
Broward Health

Broward Principals' & Assistants'
Association
Broward Teachers Union
Castle Group
Christina Fischer
Chuck Puleri
CIO Council
Cisco Systems, Inc.
City of Fort Lauderdale
City of Sunrise Police Department
Community Rehab Associates
Connie Deletis
Coral Springs Community Chest,
Inc.
Cup of Joe Scholarship
D. Stephenson Construction Co.
Dell
Dr. Dorothy Orr
Dr. Phyllis Schiffer-Simon
Florida Atlantic University
Florida Power & Light Company
Gibraltar Private Bank & Trust
Grau & Associates

Gunster
Janita Howard Williams
Johns Eastern Company, Inc.
Julian Colbeth
Keith Morgan
Kelley Kronenberg, P.A.
Kiwanis Club of Central Broward
Lenovo
Leo Goodwin Foundation, Inc
Lois Wexler
M. Austin Forman
Memorial Healthcare System
Michael and Carol Roland
Noel Hyatt
Nova Southeastern University
Office Depot
Partners in Education
Pirtle Construction Company
PNC Financial Services Group
Robert Runcie
Safelite Autoglass
Shea Ciriago

Shirley D. Baker
Teacher Development Dept./UTAP
The Carroll Group of Morgan
Stanley
The Nerdel Company
The Rubin Group
Thomas Severino
Thomas W. McCormick
Scholarship Fund
Universal Cabling Systems, Inc.
V&M Erectors, Inc.
Vernis & Bowling, P.A.

CIRCLE OF FRIENDS – \$500-\$999

Antoine Hickman
Atlantic Technical College
C & F Electric, Inc.
Charles Verner
Corporate Cost Control
Deanna Marie Appleton
Ernest Varvoutis
Falcon Foundation

Giving Circle

George Lemieux
Holland & Knight
Jamarra Henderson
Jan Goodheart
Joe Allinson
Juanda Smith
Julieta Williams
Laura Clarke
Mama Scholarship Program
Margarita Castellon
Marietta Williams
Maurice Woods
Millie Walsh

Muriel Ross
NBC Universal Media
Paladin Global Partners
Pamela Smith
Patricia Good
Patrick Sipple
Senator Nan & David Rich
Thomas A. Sirbu
Thomas and Gwendolyn Keller
UBS
Dr. Valerie Wanza
Zoila Delmonte

IN-KIND DONATIONS

Anthony Brunson, P.A.
BECON
Broward Center of the Performing Arts
D Stephenson Construction
Edward MacPherson
Florida Atlantic University
Fort Lauderdale Media Associates
Kids in Need Foundation
Nova Southeastern University
Nuccia McCormick



Building Partners in Education

Partners in Education, formerly a 501(c)(3) organization focused on building relationships between the business community and Broward County Public Schools, became a Broward Education Foundation program in March of 2017.

Partners in Education brought with it the storied fundraising event “Clueless On Las Olas,” and several PIE board members joined the Foundation’s board making it stronger than ever.

Whether connecting corporations or companies with one school or several, the focus remains the same...business investment in the education of our community’s children by building Partners in Education.



“WHAT THE BEST AND WISEST PARENT WANTS FOR HIS OWN CHILD,
THAT MUST THE COMMUNITY WANT FOR ALL ITS CHILDREN.”

~ John Dewey

Remembering Our Friends



Dr. Abraham S. Fischler

January 21, 1928 – April 3, 2017

It was a privilege for Broward Education foundation to have had a “larger than life” visionary like Dr. Abraham S. Fischler as an esteemed member of the board. He was an inspiration to many in the community at large and had a tremendous impact on education in Broward County.

Dr. Fischler served as a school board member for Broward County Public Schools and as president of Nova Southeastern University (NSU.) Under his guidance and in 1971, NSU developed and offered the nation’s first doctoral distance education program – a precursor to modern online education programs. Fischler’s distance education program was the first of its kind and to this day, remains one of the most highly regarded.

For more than 20 years, Dr. Fischler served on Broward Education Foundation’s Board of Directors. His passion for education, coupled with his unique ability to create actionable items from complex concepts served to make him an invaluable asset to the organization.

The Dr. Abraham S. Fischler Memorial Scholarship Fund at Broward Education Foundation honors his legacy and devotion to education in Broward County.



Dr. Phyllis Schiffer-Simon

February 2, 1953 – August 28, 2017

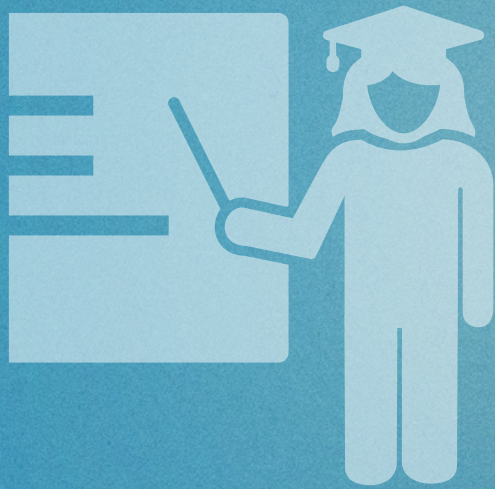
Dr. Phyllis Schiffer-Simon dedicated more than 30 years of her enormous talent to Broward County Public Schools.

Beginning in 1997, she served as Director of the Broward Education Communications Network (BECON), the television station licensed to the School Board of Broward County, FL. In this capacity, she created a vision for educational and instructional television, radio broadcasting, and distance learning that converged a multitude of technologies to enhance communications for the school system, community, and beyond. With her leadership, BECON won several Emmy Awards.

In addition to teaching at Broward County Public Schools and serving as a Nova Southeastern University Adjunct Professor, Dr. Schiffer-Simon served on Broward Education Foundation's Board of Directors for more than 15 years and her creative vision helped shape the organization.

In honor of her dedication, love and enduring vision of education in Broward, Broward Education Foundation established the Dr. Phyllis Schiffer-Simon Memorial Fund.

Board of Directors



CHAIR

Christina Fischer
The Fischer Group



CHAIR-ELECT

Frank Mandley
F. Mandley & Associates, Inc.



TREASURER

Frank Horkey
Horkey and Associates, P.A.



SECRETARY

Tim Curtin
Memorial Healthcare System



COMMITTEE CHAIRS

COMMUNITY ENGAGEMENT COMMITTEE

Tim Curtin
Memorial Healthcare System

DEVELOPMENT COMMITTEE

Gaye Stewart-Loudis
Consultant

EXECUTIVE COMMITTEE

Christina Fischer
The Fischer Group

EVENTS COMMITTEE

Robyn Hankerson
Johnson & Wales University

FINANCE COMMITTEE

Frank Horkey
Horkey and Associates, P.A.

GOVERNANCE COMMITTEE

Ruth Lynch
The Florida Consortium of Public Charter Schools

INNOVATIVE TEACHING COMMITTEE

Luz Negrón
University of Phoenix

MARKETING COMMITTEE

Christina Fischer
The Fischer Group

SCHOLARSHIP COMMITTEE

Margarita Castellón
AT&T

STRATEGIC PLANNING COMMITTEE

Margarita Castellón
AT&T

TOOLS FOR SCHOOLS BROWARD

Frank Mandley
F. Mandley & Associates, Inc.

BOARD AT LARGE

Ash Benzo
City of Fort Lauderdale

Dr. Valerie Bristor
Florida Atlantic University

Gerald Flournoy
Pearson Digital Curriculum

Shari Francis
Office Depot

Sharon Glickman, Esq.
Broward Teachers Union

Ric Green
Greater Pompano Beach Chamber of Commerce

Renee Grutman
Broward County Council PTAs/PTSAs

Stephanie Grutman
Ballard Partners

Frank Horkey
Horkey and Associates, P.A.

Dustin Jacobs
BrightStar Credit Union

Wilnar Julmiste
AndersonGlenn LLP

Clover Lawrence
Wells Fargo

Janna Peters Lhota
Holland & Knight

Jean McIntyre
IBERIABANK

Edward MacPherson
MPR Equities, LLC

Ann Murray
School Board of Broward County

Dr. Dorothy Orr
Former Interim Superintendent

Matthew Rocco
South Florida Manufacturers Association

Robert Runcie, Superintendent
School Board of Broward County

Bob Swindell
Greater Fort Lauderdale Alliance

Gale Teegarden
Houghton Mifflin Harcourt Innovation in Education Group

Mary Jo Terminello
Former District Teacher of the Year

Charles Verner
UBS Financial Services, Inc.

Dionne Wong
Broward Health

Alternate

Dr. Rosalind Osgood
School Board of Broward County

FOUNDATION STAFF

Shea Ciriago
Executive Director

Kyle Barfield
Administrative & Web Marketing Coordinator

Mari-Lee Baxter
Program Director

Coco Burns
Program Director

Hector Javier
Tools for Schools Broward Store Mgr.

Claudette Lavoie
Program Director

Coco Burns
Program Director

Pejay Ryan
Director of Marketing

Orlellys Sanchez
Finance Manager

Your investment

The Broward Education Foundation in its quest to assure every student in Broward County is afforded the opportunity to reach his or her highest potential, offers numerous ways to advocate for and support students and teachers in Broward County Public Schools.

PLEASE CONSIDER:

- Making a planned gift through the Dr. Dorothy Orr Heritage Society.
Browardedfoundation.org/plannedgiving
- Funding an Innovative Teacher Grant. *Browardedfoundation.org/expo*
- Holding a back-to-school supply drive for children in need. *Browardedfoundation.org/toolsforschools*
- Celebrating a success or honoring a loved one by naming a scholarship for a graduating senior.
Browardededucation.org/apply

An investment in the education of Broward County's students pays the best dividends for the future of Broward County.

BECOME A CHAMPION FOR EDUCATION
IN BROWARD – **JOIN US TODAY!**



BROWARD EDUCATION FOUNDATION

600 SE 3rd Avenue, 1st Floor
Ft. Lauderdale, FL 33301

754-321-2030

www.browardedfoundation.org

info@browardedfoundation.org