



Broward Education Foundation

Investing in Broward's Future since 1983

Annual Report 2017-18 & 2018-19





Mission:

Broward Education Foundation mobilizes the extended community to increase advocacy and financial support to impact student achievement.



Vision:

Broward Education Foundation envisions a community where all students in Broward County Public Schools can achieve their highest potential.

Dear Friends,

For 35 years, and with YOU, Broward Education Foundation has endeavored to provide each child in Broward County with exceptional education opportunities. With your support, students are challenged and engaged with curriculum set forth in creative ways by innovative teachers. With your support, financially disadvantaged students are equipped with school supplies they need to learn. With your support, students who wish to continue their educational journey are awarded higher education scholarships. With your support, programs like STEM and the Debate Initiative teach our students critical thinking, logic and much more.


The tragedy that occurred at Marjory Stoneman Douglas High School on February 14, 2018 shook the community and in fact, the nation, to its core. Broward Education Foundation responded by doing what it does best... fundraising.

Because of you, Broward Education Foundation is proven agile, adept and responsive to shifting needs in education and the community.

On behalf of the students serve, and for your continued support, we sincerely thank you.

Best Regards,


Board Chair 2017-18


Board Chair 2018-19


Executive Director



Chair
Senator George S. LeMieux
Chairman of the Board
Gunster

Tony Argiz
CPA, Brown, Morrison, Argiz

Fabiola Brumley
Palm Beach President
Southeast Regional Executive
Bank of America, N.A.

Robert Butterworth
Former Florida Attorney General

Rita Case
COO & President
Rick Case Automotive Group

Julie Fisher Cummings
Philanthropist, Community Advocate

Michael Freedland
Founding Partner
Freedland | Harwin | Valori

Tom Garfinkel
CEO, Miami Dolphins

Heather Geronemus
Media & Community Relations Manager
Ultimate Software

Mike Jackson
CEO, AutoNation

Keith Koenig
President, City Furniture

David Lawrence, Jr.
Retired Miami Herald Publisher
Children's Movement
of Florida Chair

Juliette Rouhac
Regional Manager
Florida Power & Light

Dr. David Rube, MD
Medical Director - Child & Adolescent
Psychiatry, Joe Dimaggio Children's
Hospital

George Temel
Founder, Clarity Financial Planning

Todd Templin
COO, Boardroom PR

Venus Williams
WTA ProTennis Player

Matt Yale
Partner, Tusk Ventures



In the immediate aftermath of the horrific tragedy at Marjory Stoneman Douglas High School, Broward Education Foundation created the official Stoneman Douglas Victims' Fund to help the families and victims on February 14, 2018.

In four and half months, Broward Education Foundation raised \$10.5M-100% of which was distributed beginning July 1st to 1,517 families, victims and those impacted by this senseless atrocity.

Hundreds of fundraisers large and small were held to support these brave individuals and contributions came from near and far. Working in partnership with GoFundMe and the National Compassion Fund, Broward Education Foundation worked tirelessly to manage and ensure the transparent and equitable distribution of the funds raised. At the behest of Broward Education Foundation's Board, the Stoneman Douglas Victims' Fund Steering Committee, with input from the community at three public town hall meetings, helped raise funds and developed the distribution timelines and protocols.

The funds distributed were a gift to those impacted from more than 37,000 caring and compassionate people, organizations and businesses from the community, across the nation and throughout the world. Victims applied and each claim was carefully vetted through the National Compassion Fund. These heartfelt gifts were distributed as follows: \$400,000 to those that lost a loved one, \$256,000- \$39,000 to those injured, \$2,500 to those in the building and \$1,000 to those on campus.

GoFundMe named the official Stoneman Douglas Victims' Fund as the third largest campaign in its history.

Innovative Teacher Grants

Broward Education Foundation fosters innovative teachers with grants to help them develop and fund engaging curriculum that positively increases PreK-12 learning outcomes. With a multi-faceted "best practices" model, Innovative Teachers are recognized for their ingenuity, their classrooms benefit from additional grant funding and their peers replicate, enhance and build upon proven methods of academic achievement.



IMPACT

2017-18

2018-19

\$132,727
VALUE OF GRANTS

\$144,298
VALUE OF GRANTS

218
INNOVATIVE TEACHER
GRANTS AWARDED

235
INNOVATIVE TEACHER
GRANTS AWARDED

27,819
PREK-12 STUDENTS
IMPACTED

29,685
PREK-12 STUDENTS
IMPACTED



IMPACT

2017-18	2018-19
3,650 TEACHERS SHOPPED FREE	4,018 TEACHERS SHOPPED FREE
\$1,572,586 TOTAL VALUE OF SUPPLIES DISTRIBUTED	\$2,000,000 TOTAL VALUE OF SUPPLIES DISTRIBUTED
129,804 PREK-12 STUDENTS IMPACTED	130,000 PREK-12 STUDENTS IMPACTED



School Supplies

Broward Education Foundation's School Supply Center equips students for success by providing free school supplies for children in need. Through a collaborative partnership with Kids in Need Foundation and tremendous support from business and community leaders, educators in schools serving a high-percentage of economically disadvantaged students shop free for students and classrooms.

Student Scholarships

Broward Education Foundation stewards scholarships for qualified graduating students in Broward County Public Schools. Scholarship awards are primarily based on need, as well as on merit and academic achievement. Thanks to generous donors and Florida Prepaid College Foundation, students pursuing a university, college or vocational education receive scholarships ranging from \$500 to a four-year scholarship.



IMPACT

2017-18	2018-19
<p>305 STUDENTS AWARDED SCHOLARSHIPS</p>	<p>321 STUDENTS AWARDED SCHOLARSHIPS</p>
<p>1,200 STUDENTS APPLIED</p>	<p>1,300 STUDENTS APPLIED</p>
<p>\$1,504,938 TOTAL SCHOLARSHIPS AWARDED</p>	<p>\$1,413,000 TOTAL SCHOLARSHIPS AWARDED</p>



**DEBATE
INITIATIVE**

15,000

PREK-12 STUDENTS
IMPACTED



**TURNAROUND
ARTS:
BROWARD
COUNTY**

4,600

PREK-12 STUDENTS
IMPACTED



STEM

200,000

PREK-12 STUDENTS
IMPACTED



**CAREER
TECHNICAL,
ADULT,
COMMUNITY
EDUCATION
(CTACE)**

350

PREK-12 STUDENTS
IMPACTED

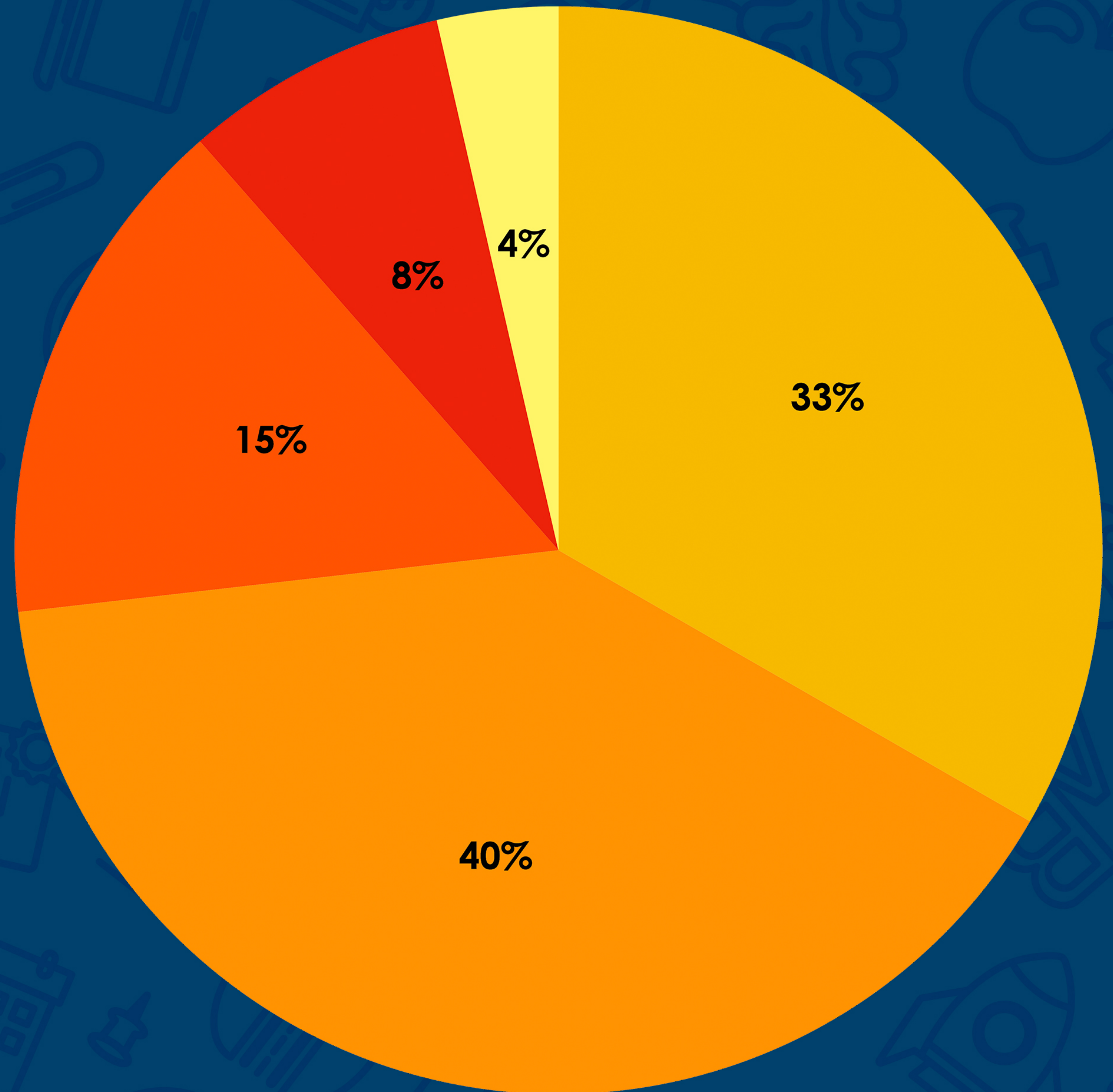


Initiatives

Broward Education Foundation supports District initiatives that encourage critical thinking, creativity, professional development and more.

2017-18 Revenue

SCHOLARSHIP PROGRAM	\$1,206,400
TOOLS FOR SCHOOLS BROWARD PROGRAM	\$1,444,510
INNOVATIVE TEACHING PROGRAM	\$556,222
SPECIAL EVENTS AND FUNDRAISING	\$284,876
INVESTMENT & FEE INCOME	\$130,148
TOTAL REVENUE	\$3,622,156



2017-18 Programs Funded

SCHOLARSHIP PROGRAM

\$1,020,209

TOOLS FOR SCHOOLS BROWARD PROGRAM

\$1,227,097

INNOVATIVE TEACHING PROGRAM

\$273,992

FUNDRAISING

\$451,335

GENERAL ADMINISTRATION

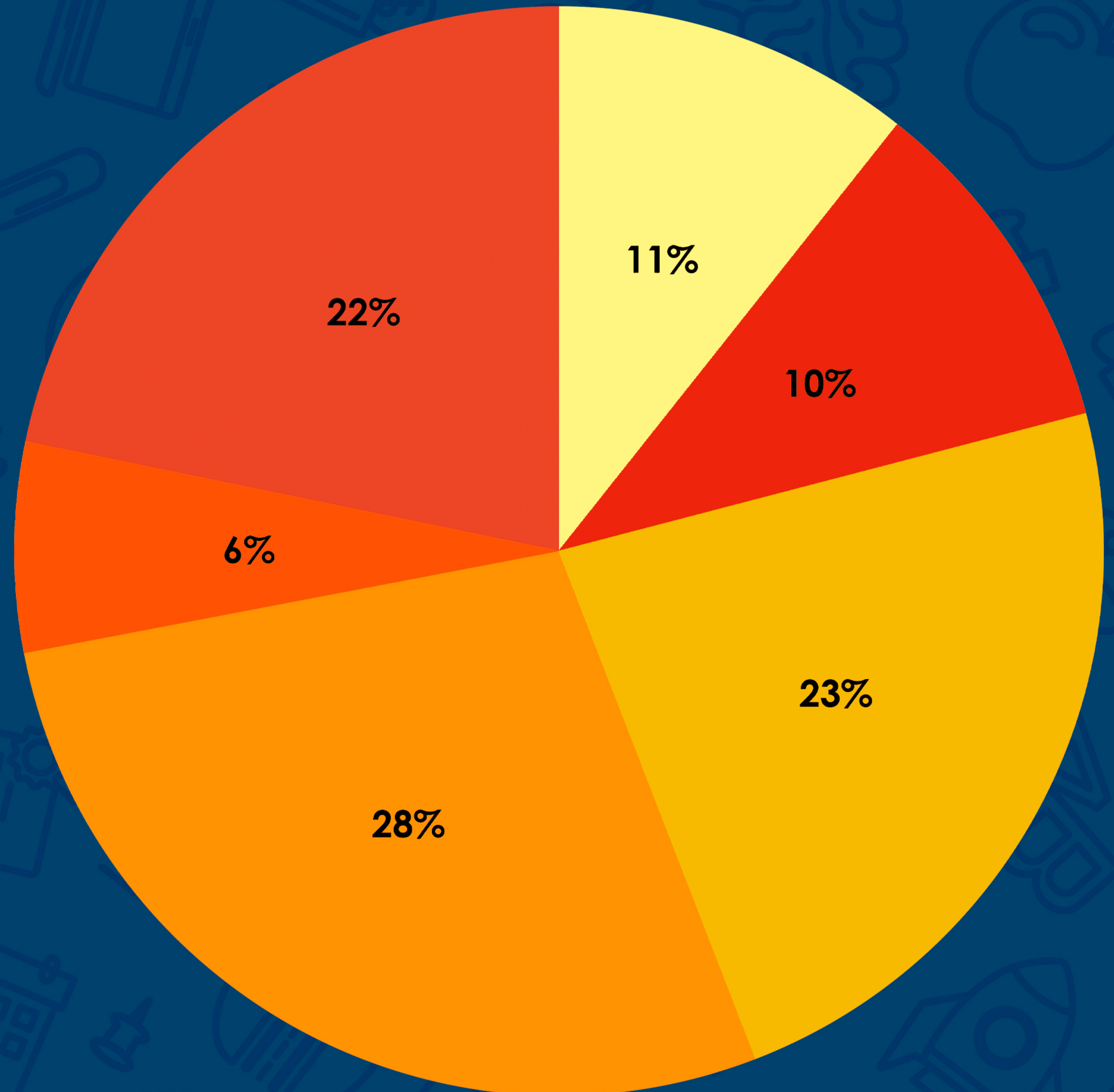
\$469,866

OTHER PROGRAMS AND EXPENDITURES

\$958,360

TOTAL EXPENDITURES

\$4,400,859



2018-19 Revenue

SCHOLARSHIP PROGRAM **\$1,184,869**

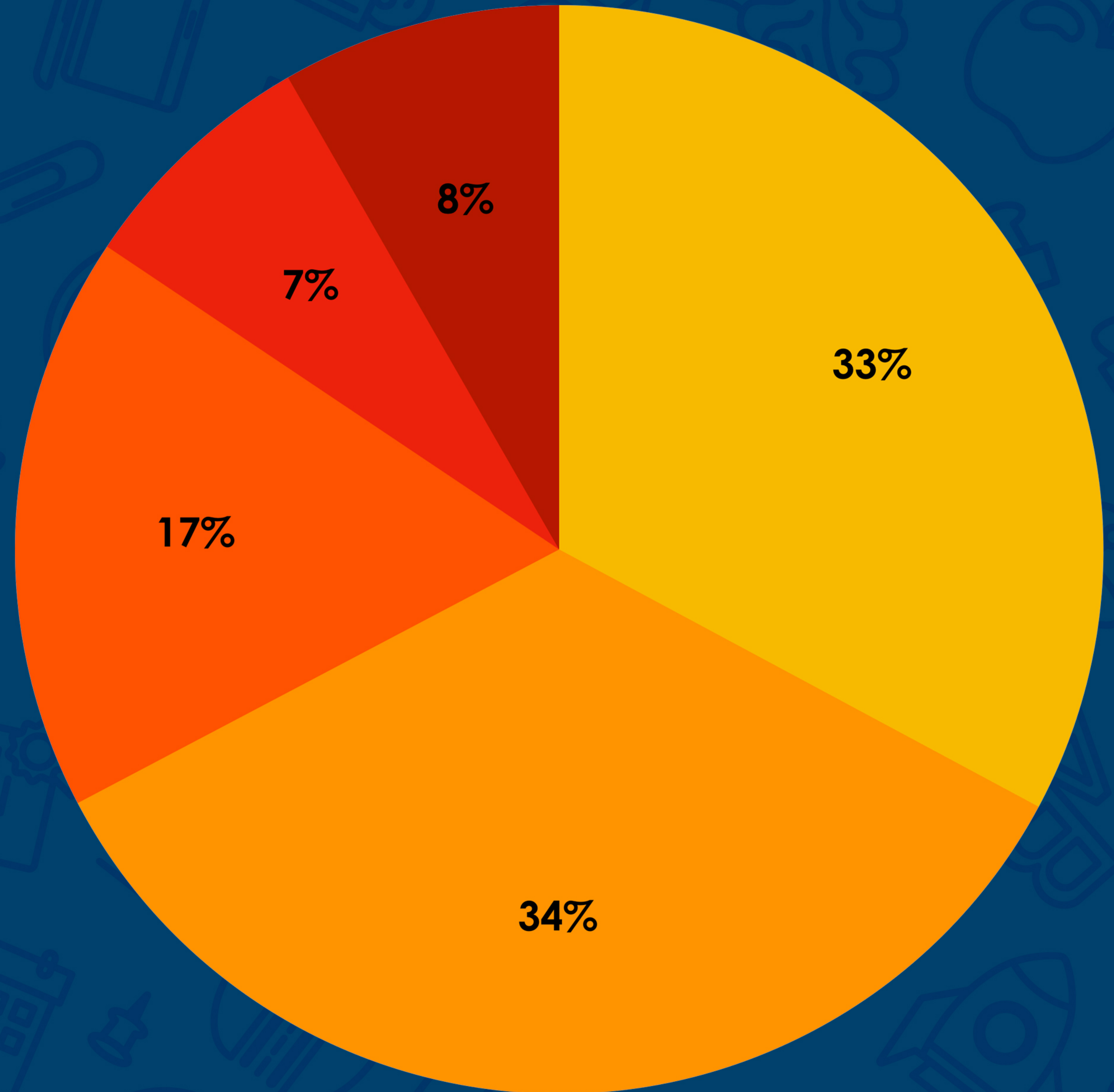
TOOLS FOR SCHOOLS BROWARD PROGRAM **\$1,242,973**

INNOVATIVE TEACHING PROGRAM **\$617,271**

SPECIAL EVENTS AND FUNDRAISING **\$263,676**

INVESTMENT & FEE INCOME **\$299,495**

TOTAL REVENUE **\$3,608,284**



2018-19 Programs Funded

SCHOLARSHIP PROGRAM

\$962,864

TOOLS FOR SCHOOLS BROWARD PROGRAM

\$1,295,565

INNOVATIVE TEACHING PROGRAM

\$165,675

FUNDRAISING

\$592,550

GENERAL ADMINISTRATION

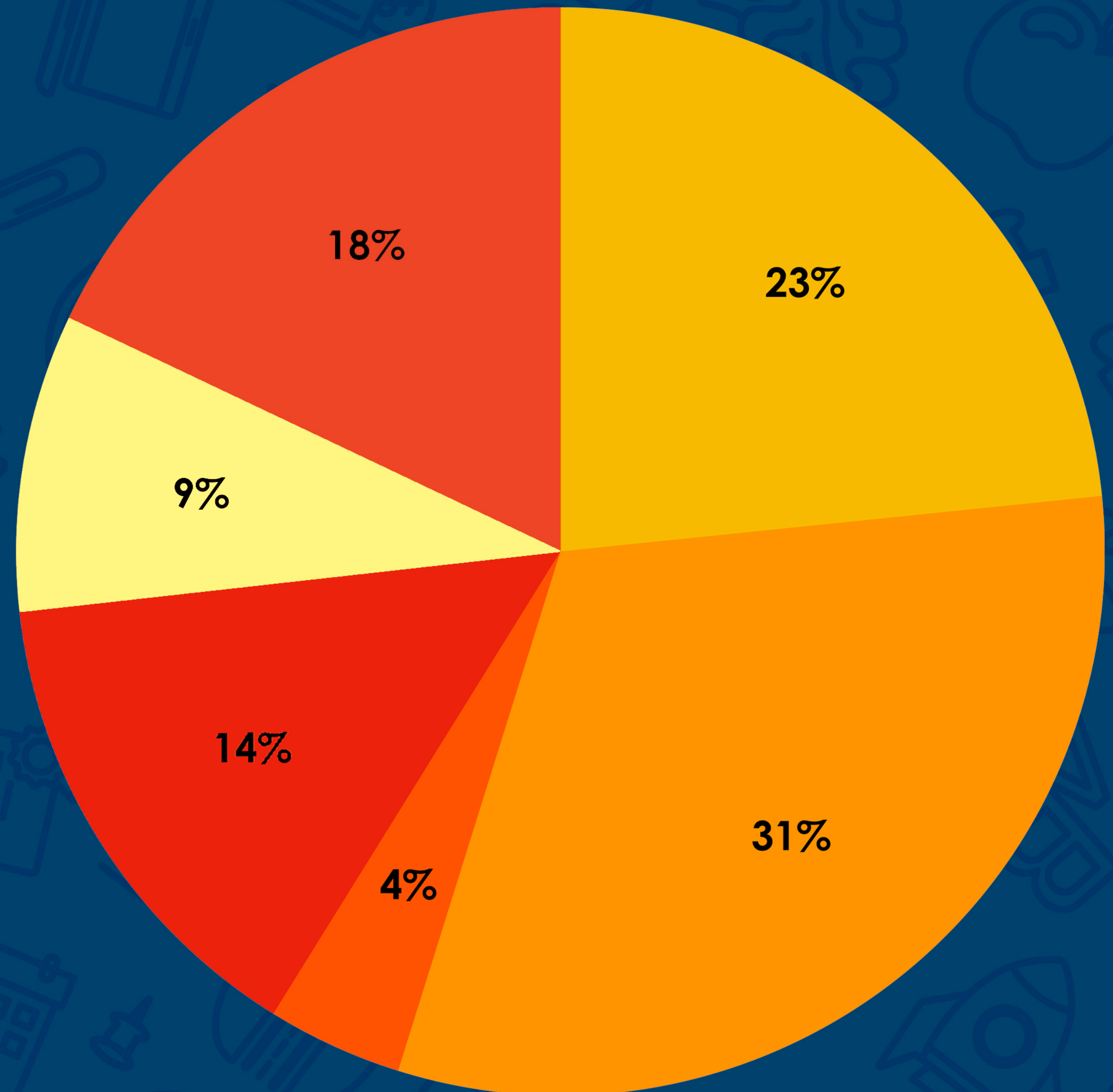
\$363,248

OTHER PROGRAMS AND EXPENDITURES

\$739,568

TOTAL EXPENDITURES

\$4,119,859





Frank Horkey, Chair
Horkey & Associates, P.A.



Tim Curtin, Vice-Chair
Memorial Healthcare System



Ruth Lynch, Secretary
Florida Consortium of
Public Charter Schools



Jean McIntyre, Treasurer
Pompano Beach Chamber
of Commerce

Board of Directors

Christina Fischer, Past Chair
The Fischer Group

Alfredo Aguirre
Merrill Lynch Wealth Management

Margarita Castellon
AT&T

Sue Colton
Author

Ron Drew
Greater Fort Lauderdale Alliance

Sharon Glickman, Esq.
Broward Teachers Union

Myriam Campo-Goldman
Harmony Development Center

Ric Green
Brazilian Business Group

Renee Grutman
Broward County Council
of PTA/PTSAs

Stephanie Grutman
Ballard Partners

Robyn Hankerson
Broward Sheriff's Office

Dustin Jacobs
BrightStar Credit Union

Wilnar Julmiste, Esq.
AndersonGlenn, LLP

Clover Lawrence
Wells Fargo

Janna Peters Lhota, Esq.
Holland & Knight

Ann Murray
School Board of Broward County

Luz Negrón
Broward College

Dr. Dorothy Orr
Former Interim Superintendent

Robert Runcie, Superintendent
School Board of Broward County

Bob Swindell
Greater Fort Lauderdale Alliance

Charles Verner
UBS Financial Services, Inc.

Dionne Wong
Community Advocate



Staff

Shea Ciriago
Executive Director

Kyle Barfield
Administrative & Web
Marketing Coordinator

Mari-Lee Baxter
Program Director

Coco Burns
Program Director

Hector Javier
School Supply Center
Manager

Claudette Lavoie
Program Director

Carol McFadden
Accounts Payable Specialist

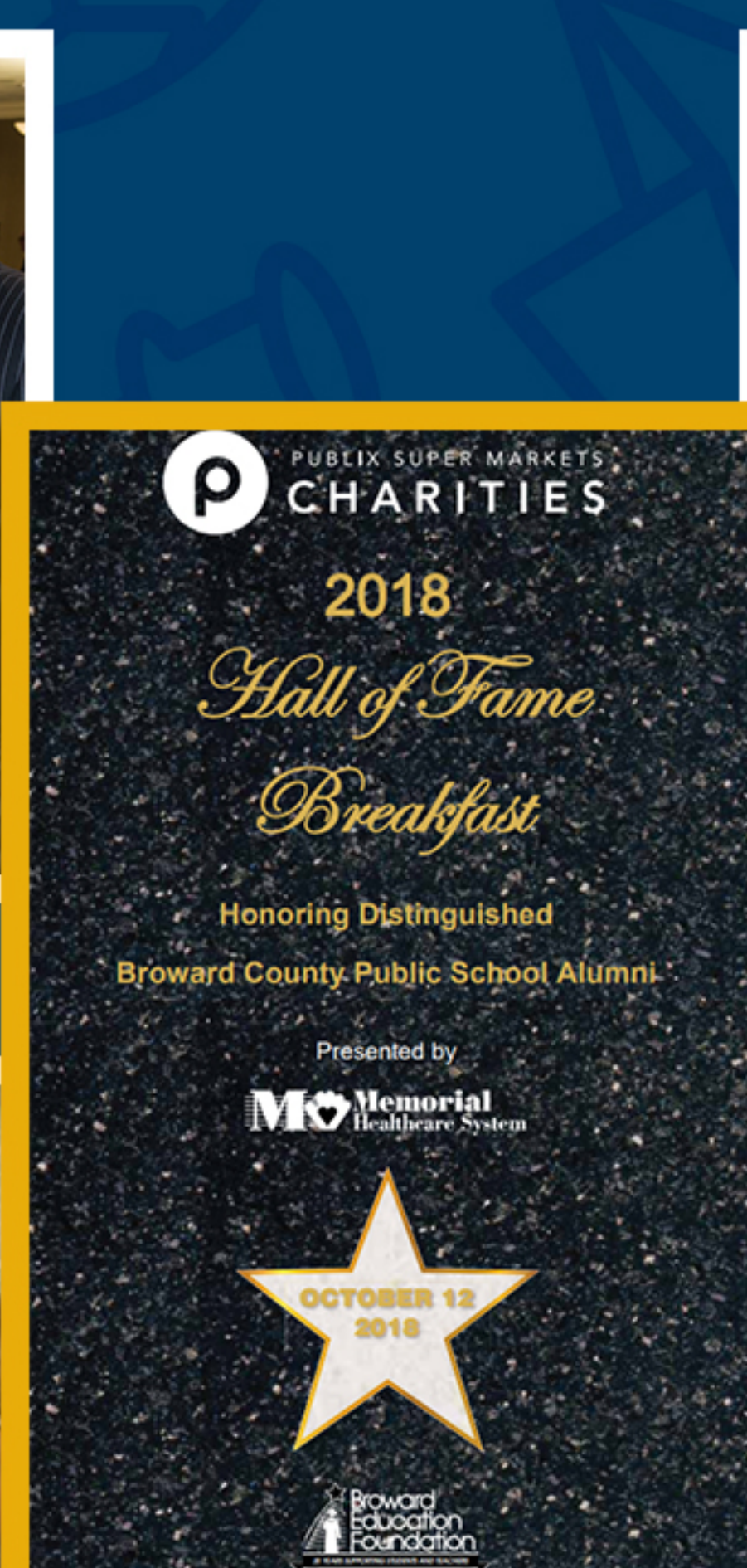
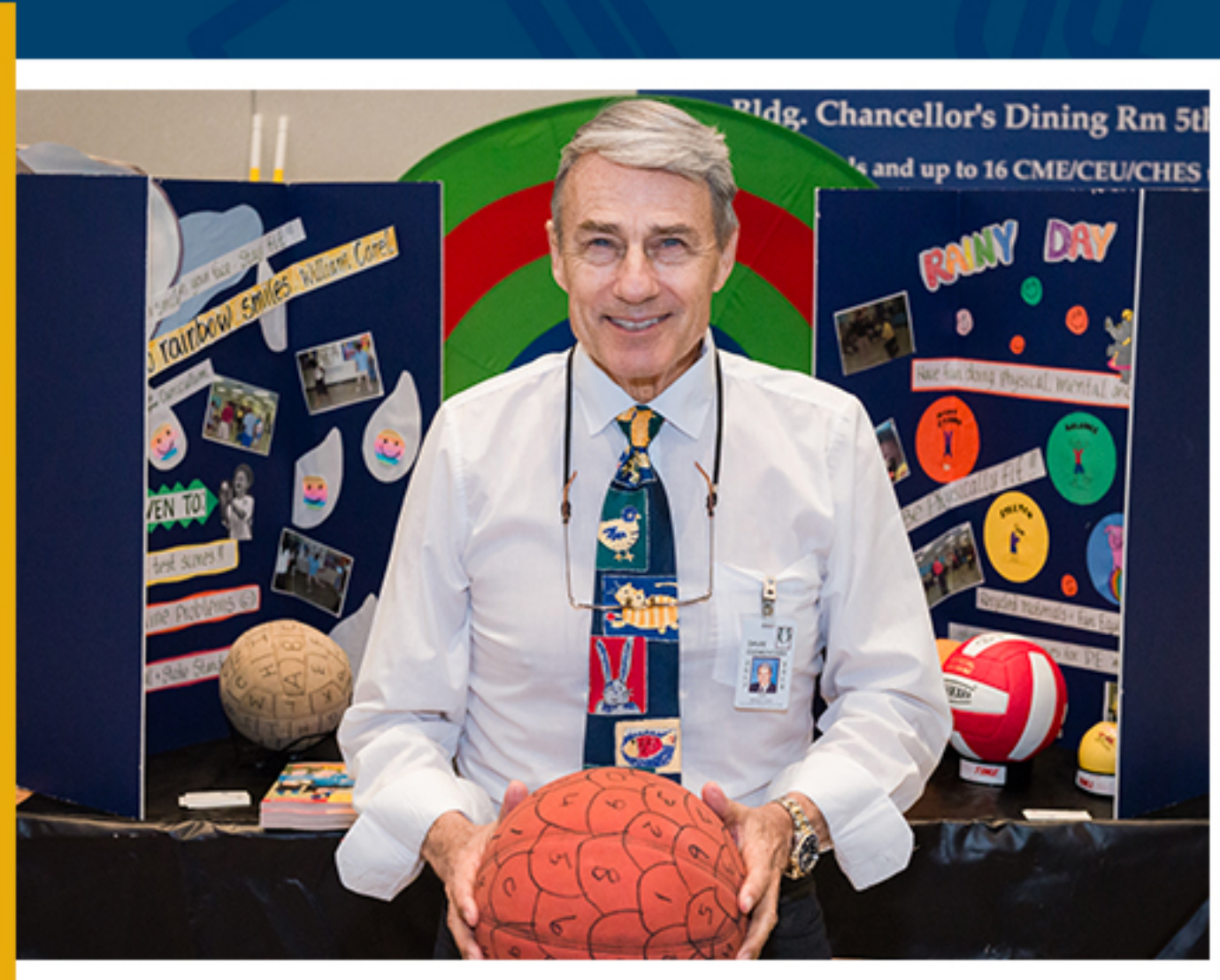
Liz Reynolds
Controller/Accountant

Pejay Ryan
Director of Marketing

IN THE DISTRICT

2017-18

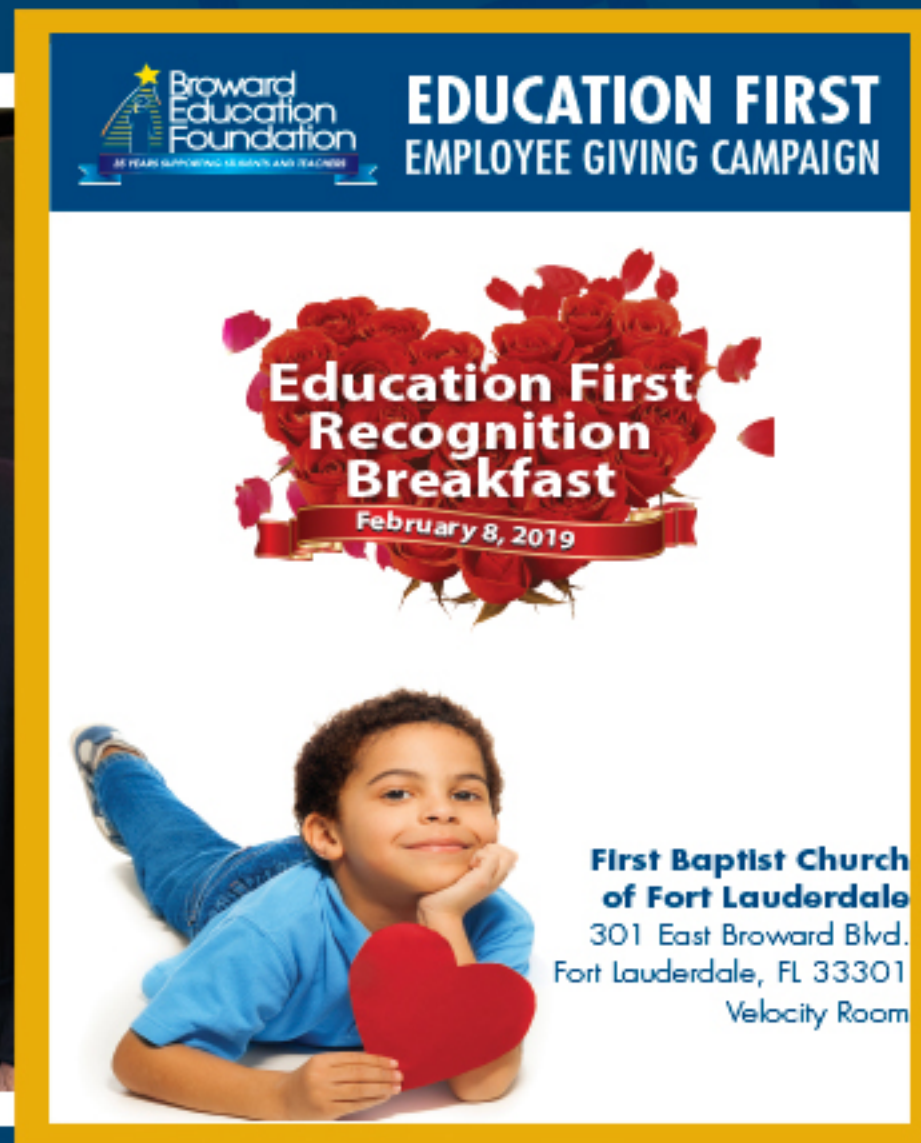
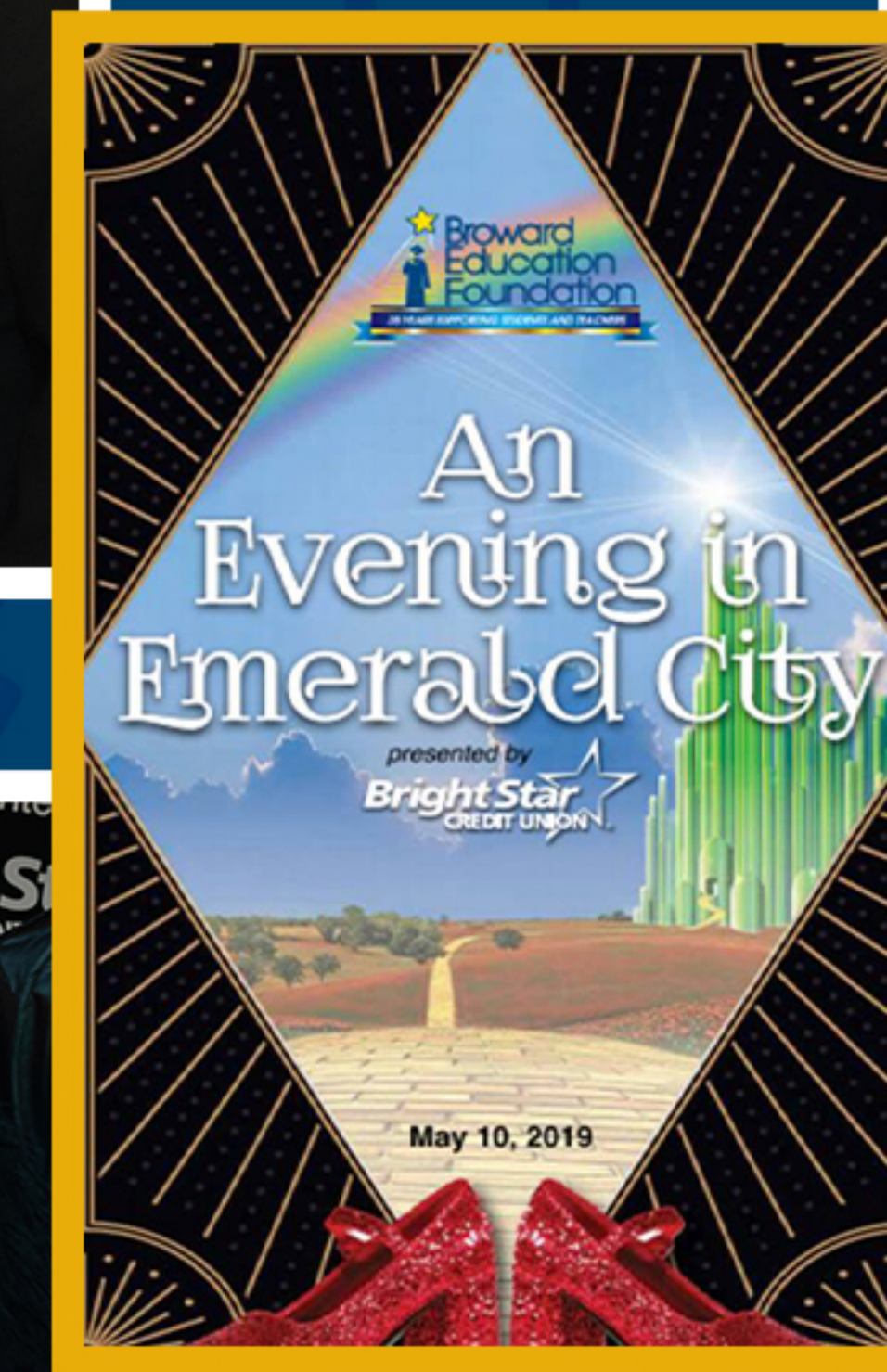
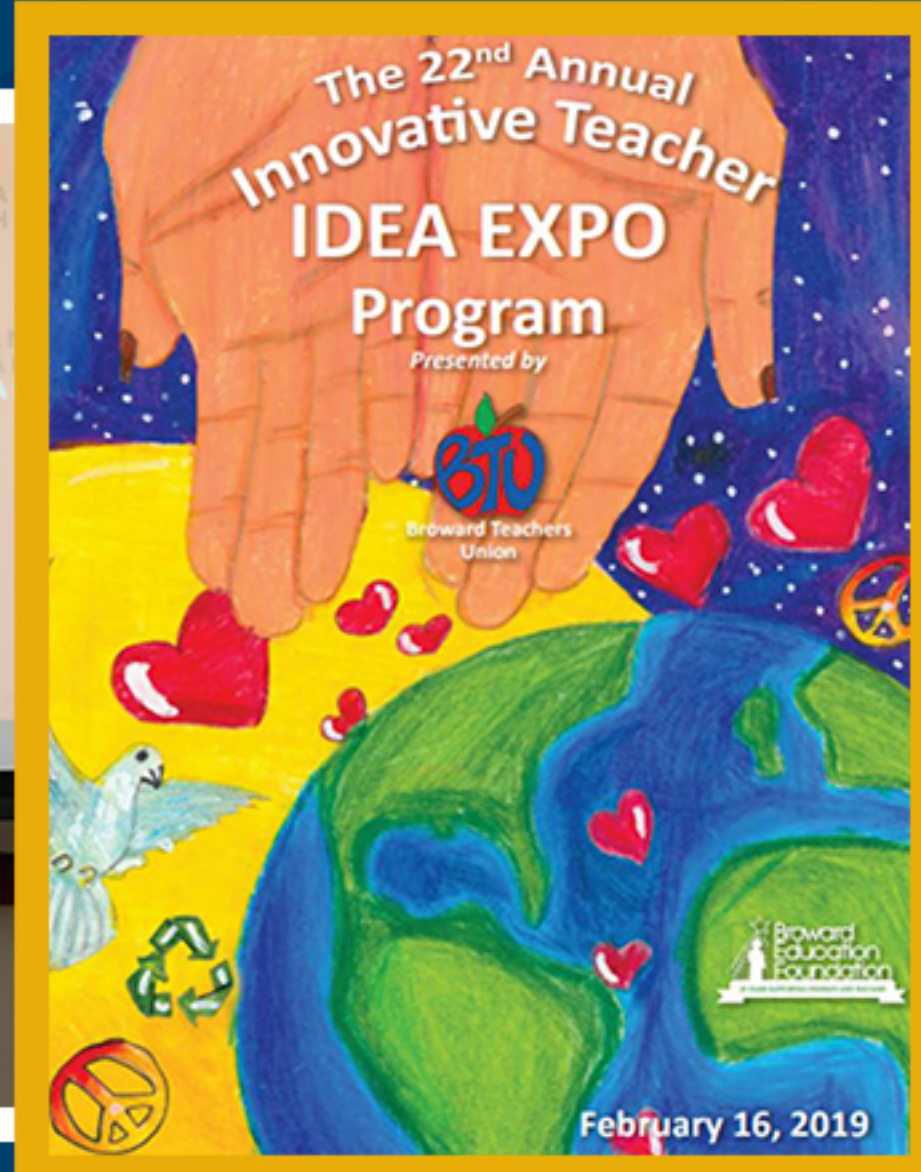
IN THE COMMUNITY



IN THE DISTRICT

2018-19

IN THE COMMUNITY



Giving Circles

2017-18

Founder's Circle \$100,000+

Broward County Public Schools Employees -
Education First Campaign
Community Foundation of Broward
Florida Education Foundation Matching Grant
Florida Prepaid College Foundation
JPMorgan Chase Foundation

President's Circle \$50,000 - \$99,999

BrightStar Credit Union
Connie & Joe Deletis
Andrew Left Family
Macy's
State of Florida -
License for Learning
SunTrust Foundation
Wells Fargo

Diamond Circle \$25,000-\$49,999

Brown & Brown, Inc.
Fort Lauderdale Country Club
Rotary Club of Weston / WestonLawyers.com
The Tides Foundation

Platinum Circle \$10,000-\$24,999

Amaturo Family Foundation, Inc.
Avaya
Broward Teachers Union
Consortium of Florida Education Foundations
Ford Motor Company
City of Hallandale Beach
City of Hollywood
Houghton Mifflin Harcourt
JM Family Enterprises, Inc.
Marlins Foundation
Memorial Healthcare System
Alan Methelis
National Forensic League National Speech
and Debate Association
Nova Southeastern University
City of Pompano Beach
Publix Super Markets Charities
Rick Case Automotive Group
City of Sunrise Leisure Services
Stranahan High School

2017-18

Giving Circles

Gold Circle \$5,000-\$9,999

Amscot
Avaya Technology
AXA Advisors
Bank of America
BCPS FFEA Programs
BCPS Information & Technology
BCPS Pupil Transportation
BMG Money Inc
Boca West Country Club
CBRE | Heery international
Charter Schools of Excellence
Chuck Puleri & Associates, Inc.
Shea Ciriago
The Corradino Group
Dell
Florida Atlantic University
The GEO Group Broward Transitional Center
Gordon Family Foundation
Gulfstream Park Racing Association, Inc.
The Links, Incorporated
Miami Marlins, L.P.
Motorola Solutions Foundation
Pirtle Construction Company
Drs. Subhash and Vasanti Puranik
Seminole Hard Rock Hotel & Casino
State Farm Insurance
Stifel Trust Company
Stranahan Endowment Fund
City of Sunrise Police Department
Conrad Timpf

Silver Circle \$1,000-\$4,999

Aetna
Akerman LLP
Arthur J. Gallagher Benefit Services
Arthur J. Gallagher Risk Management Services
AT&T
B Ocean Resort
B&I Contractors, Inc.
Baldwin Family Charitable Foundation
Ballard Partners
Barsky Greenstein Foundation, Inc.
BBX Capital Foundation, Inc.
Becker & Poliakoff, P.A.
Broward Center for the Performing Arts
Broward College
Broward County Public Schools
Broward Principals' & Assistants' Association
Anthony Brunson
Margarita Castellon
CIO Council
City Furniture
Coral Springs Community Chest, Inc.
Amber & Jammal Davenport
William Davis
Deborah Day
Dockery
Dr. Lawrence Bennett Foundation
Florida Panthers Hockey Club
Florida Power & Light

Fort Lauderdale Country Club
Freedland Harwin Valori, PLLC
Thomas, R. Geoffrey
Joseph Gershenov
Grind Coffee Project
Hamilton M & Blanche C Forman
Christian Foundation
Donna Haynes
Holland & Knight
Hollywood Rotary Foundation, Inc.
Holy Cross Hospital
Joan Huber
Henry Huisman, Jr.
I&T HEART
Johns Eastern Company, Inc.
Kelley Kronenberg, P.A.
Knowledgehook Inc
Lauderdale Lakes Middle School
Leo Goodwin Foundation, Inc
Lucky's Market
Donna and David Marcus
The Miami Foundation
National Alliance for Medicaid in Education
National Christian Foundation of South Florida
Luz Negron
Andre Newton

Matthew Nobles -
MSD Eagle Scholarship
Nova High School
City of Oakland Park
OneBlood, Inc.
Dr. Dorothy Orr
PNC Bank
Susan Pugliese
David Routenberg
The Rubin Group, Inc.
Frederick Schiff
Sistrunk Historical Foundation
Buzz Smith - JRS Memorial
Stephen Wexler
Memorial Scholarship
TSA Consulting Group, Inc.
University of Phoenix
Washington Government
Relations Group
Wheelabrator Technologies

Giving Circles

2017-18

Circle of Friends \$500-\$999

All County Music
American Heritage School
of Boca Delray
American Learning Systems, Inc.
DBA American Heritage School
Operating Account
AXA Advisors, LLC
BCPS Athletics & Student Activities
Heather Brinkworth
Cipla USA Inc.
Cooper City High School
Corporate Cost Control
Delta Sigma Theta Sorority, Inc.
Dr. Uttma Dham
Dianna Hopkins Incorporated
Jay Dick
Dillard High School
FirstService Residential
Shirley Fischler
Hollywood Hills High School
Jack and Jill Children's Center, Inc.
Dustin Jacobs
Robin Kesselman
Lifestyle Publications LLC
Delores Luton

McArthur High School
Patrick McQuaid
Northeast High School
Linda O'Mara
Panther Run Elementary
Pierson Grant Public Relations, Inc.
Michael Roland
Christina Saull
So. Fla Business & Wealth, LLC
South Broward High School
Lorraine Stein
Toyota of North Miami
Mirna Valencia
Vernis & Bowling of Broward, P.A.
Wealth Companies, LLC
Winterfest, Inc.

In-Kind Donations

Abess
Abess Family
Anthony Brunson P.A.
BECON
Comcast
D Stephenson Construction
Diplomat Resort
Diplomat Resort IT Department
Driven With Compassion
Edd Helms Electric
The Fischer Group
Hoffman's Chocolates
Ivy Realty
JoAnn Fabrics and Crafts
Kids in Need Foundation
Lenovo
Missing Link Consultants, Inc.
Nova Southeastern University
Office Depot Foundation
Orchard Supply Hardware
Pierson Grant Public Relations
Republic Beverage Distributors
Sprayregen Family Foundation
Thirty-One Gifts
Twin Star International
Video Dynamics
Yoobi

Giving Circles

2018-19

Founder's Circle \$100,000+

Broward County Public Schools Employees -
Education First Campaign
Community Foundation of Broward
State of Florida Education Foundation
Florida Prepaid College Foundation
Frederick A. DeLuca Foundation
Macy's

President's Circle \$50,000 - \$99,999

Aetna
BrightStar Credit Union
Andrew Left Family
MetLife
Rotary Club of Weston/WestonLawyers.com

Diamond Circle \$25,000-\$49,999

Consortium of Florida Education Foundations
Wells Fargo

Platinum Circle \$10,000-\$24,999 Cont.

Arthur J. Gallagher Risk Management Services
Bank of America
BNY Mellon
Broward Teachers Union
City of Hallandale Beach
City of Hollywood
JM Family Enterprises, Inc.
The Links, Inc. - Fort Lauderdale (FL) Chapter
Marjory Stoneman Douglas High School
Scholarship Fund
MedPro Staffing
Memorial Healthcare System
Alan Methelis
Office Depot
Publix Super Markets Charities
State of Florida - *Support Education* License Tags
Sistrunk Historical Festival, Inc.
City of Sunrise Leisure Services
BCPS Urban Teacher Academy Program
Washington National Insurance
(Performance Matters Associates)
Estate of Beverly Ann Williams

2018-19

Giving Circles

Gold Circle \$5,000-\$9,999

AT&T
Bank of America
BCPS Information & Technology
BMG Money Inc
Bosch Community Fund
Broward Sheriff's Advisory Council
Career, Technical, Adult,
& Community Education
CBRE | Heery international
Charter Schools of Excellence
Children's Services Council
Shea Ciriago, Eileen Bolton Mem. Scholarship
Dr. Harold and Gail Cohen
Endowment Scholarship
The Corradino Group
Gail, Rob, Jennifer Cox Mem. Scholarship
Amber & Jammal Davenport
Fort Lauderdale Country Club
Florida Power & Light
The GEO Group Broward Transitional Center
Greater Hollywood Chamber of Commerce
JDL Technologies, Inc.
Johns Eastern Company, Inc.
National Speech and Debate Association
New York Life Insurance Company
Pirtle Construction Company
Drs. Subhash & Vasanti Puranik
South FL Agile Software Association
State Farm Insurance
City of Sunrise Police Department
Stranahan Education Endowment Fund
Conrad Timpf, Dr. Bradley Timpf Memorial
Ultimate Software

Silver Circle \$1,000-\$4,999

Akerman LLP
Andrew Patrick Huber Memorial
Arthur J. Gallagher Benefit Services
Atlantic Technical School
Attucks Middle School
Avaya Technology
AXA Advisors, LLC
B&I Contractors, Inc.
BCPS ESOL/Bilingual Department
BCPS Information and Technology
BCPS School Applications
BCPS Strategic Planning Department
BCPS Student Services Department
BCPS Title I, Migrant and Special Programs
Becker & Poliakoff, P.A.
Blanche Ely high School
Boies Schiller & Flexner LLP
Boyd Anderson High School
Broward Principals' & Assistants' Association
Cara Loughran Dancing Angel Scholarship
Carollo
Castle Hill Elementary School
Charles W. Flanagan High School
Charles Wanza Memorial Scholarship
Chuck Puleri & Associates, Inc.
CIO Council
Citrix
Colodny Fass
Coral Springs Community Chest, Inc.
David & Donna Marcus
Charitable Fund
William Davis
Dell

Dolphin Bay Elementary School
Eagle Point Elementary School
Education Elements
Faria Business Services, Inc.
Christina Fischer
Todd Foster
Galleria Mall
Greater Fort Lauderdale Alliance
Greenberg Traurig
Gunster
Haliczer Pettis & Schwamm, P.A.
Hamilton M. & Blanche C. Forman
Christian Foundation
Faria Haque
Henry D. Perry Education Center
Holland & Knight
I.B.E.W. Local Union 104
iHeartMedia South Florida
Interiors by Steven G
Wilnar Julmiste
City of Lauderhill
Lauderdale Lakes Middle School
Leo Goodwin Foundation, Inc.
Laurie Rich Levinson
Lexmark
Ann Murray
Barbara J. Myrick, Esq.
Matthew Nobles
National Wildlife Federation
NBC 6
NBC Universal Media
Northern Trust
Nova Southeastern University
OneBlood, Inc.

Oriole Elementary School
Dr. Dorothy J. Orr
Park Springs Elementary School
Pompano Beach Middle School
Nan & David Rich
Rick Case Automotive Group
David Routenberg
The Rubin Group, Inc.
Supt. Robert Runcie
Safelite AutoGlass Foundation
School Board of Broward County
Send a Kid to Camp, Inc.
South Broward High School
Walker Elementary School
Westpine Middle School
Steven Wexler
Memorial Scholarship
Tripp Scott
TSA Consulting Group, Inc.
Charles Verner

Giving Circles

2018-19

Circle of Friends \$500-\$999

BCPS Athletics & Student Activities
BCPS OSPA
Felipe Brown
Joey Carter
Zoila DelMonte
Charles R. Drew Elementary School
Carolyn Eggelletion
Florida Agriculture in the Classroom,
Inc.
Fort Lauderdale High School
Patricia Good
Kenya Goree
Greenwood
Maria Hernandez
Antoine Hickman
Frank Horkey
iFLY
Delores Luton
Michael Mann
Graciela McCarthy
McArthur High School
Tonya Minisci
Darlene Moppert
Nova High School

David Pereira
Glenn Phillips
Plantation High School
Sherrie Poitier
Pride Center at Equality Park
Janice Randolph
Cara Rince
Rafeal Santos
Aymara Schmidt
Teresa Shepherd
Lorraine Stein
Marvin & Elaine Stein
Stoneman Douglas High School
Laurel Thompson
Toyota of North Miami
Paul Tunink
Dr. Valerie Smith-Wanza
Western High School
Horace Wilder
Jennifer Wilson
Rosemarie Winston
Maurice Woods

In-Kind Donations

BECON
Costume World
D. Stephenson Construction
Florida Atlantic University
Todd Furbish
Hoffman's Chocolates
iFLY
Jimmy Jam Productions
JoAnn Fabric and Craft Stores
Kids in Need Foundation
Memorial Healthcare System
Naughty Tea (Double Eagle Distributing)
NBC6
Nova Southeastern University
Office Depot
Pier Sixty Six Resort & Marina
Pierson Grant Public Relations
Publix
Toyota of North Miami
Video Dynamics
Vista Print
Yoobi



In Memoriam



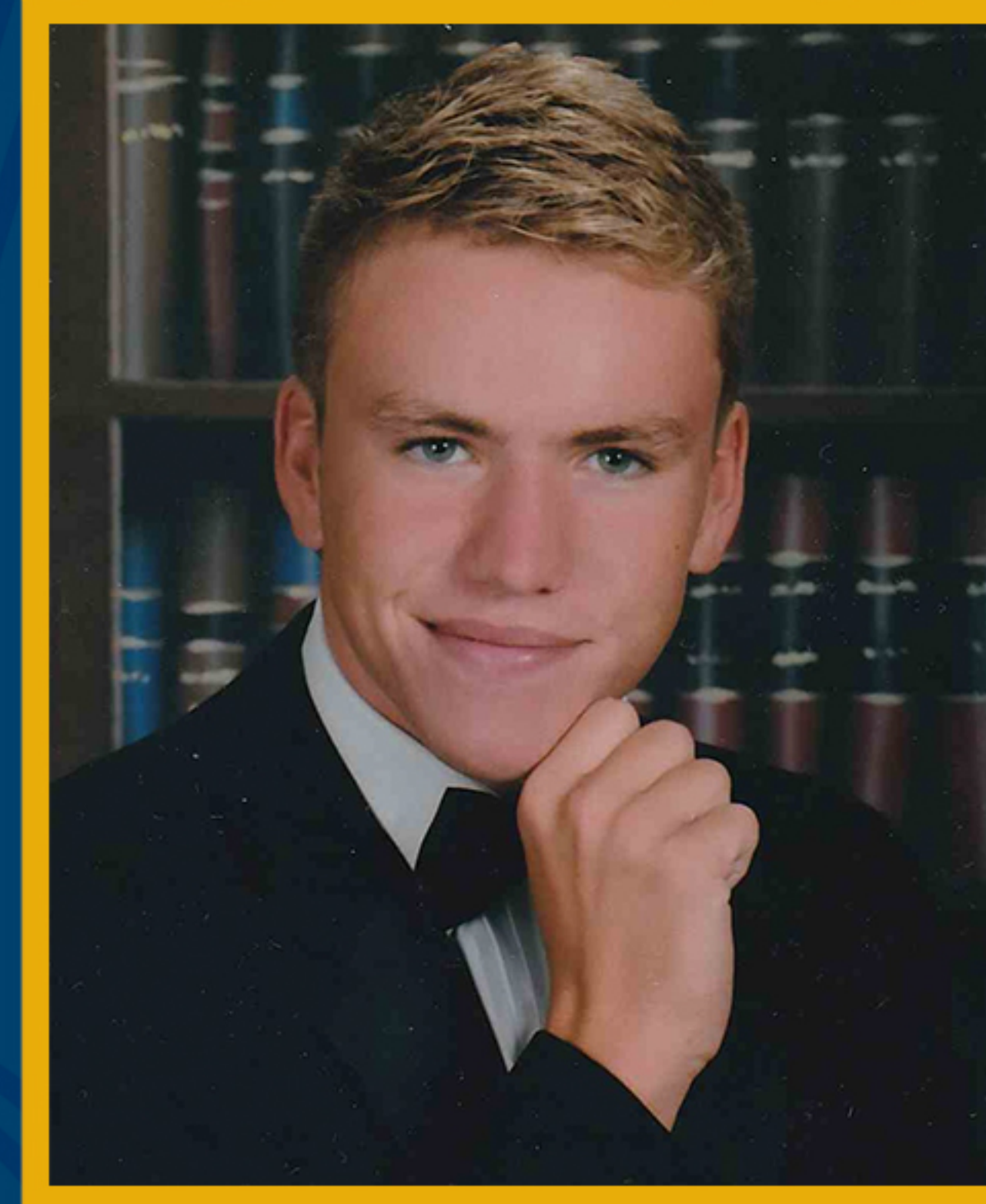
Alyssa Alhadeff



Martin Duque Anguiano



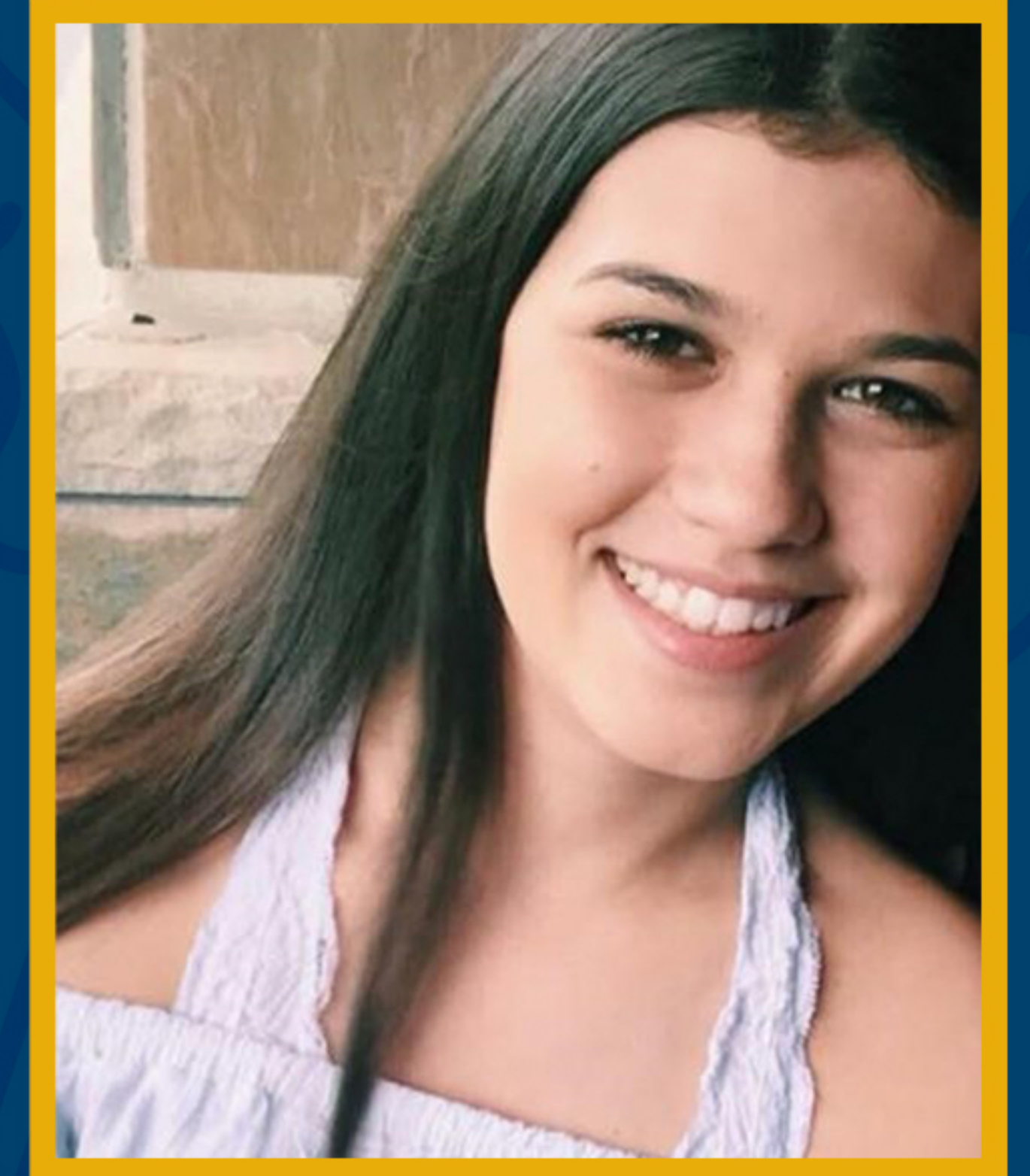
Scott Biegel



Nicholas Dworet



Aaron Feis



Jaime Guttenberg



Christopher Hixon



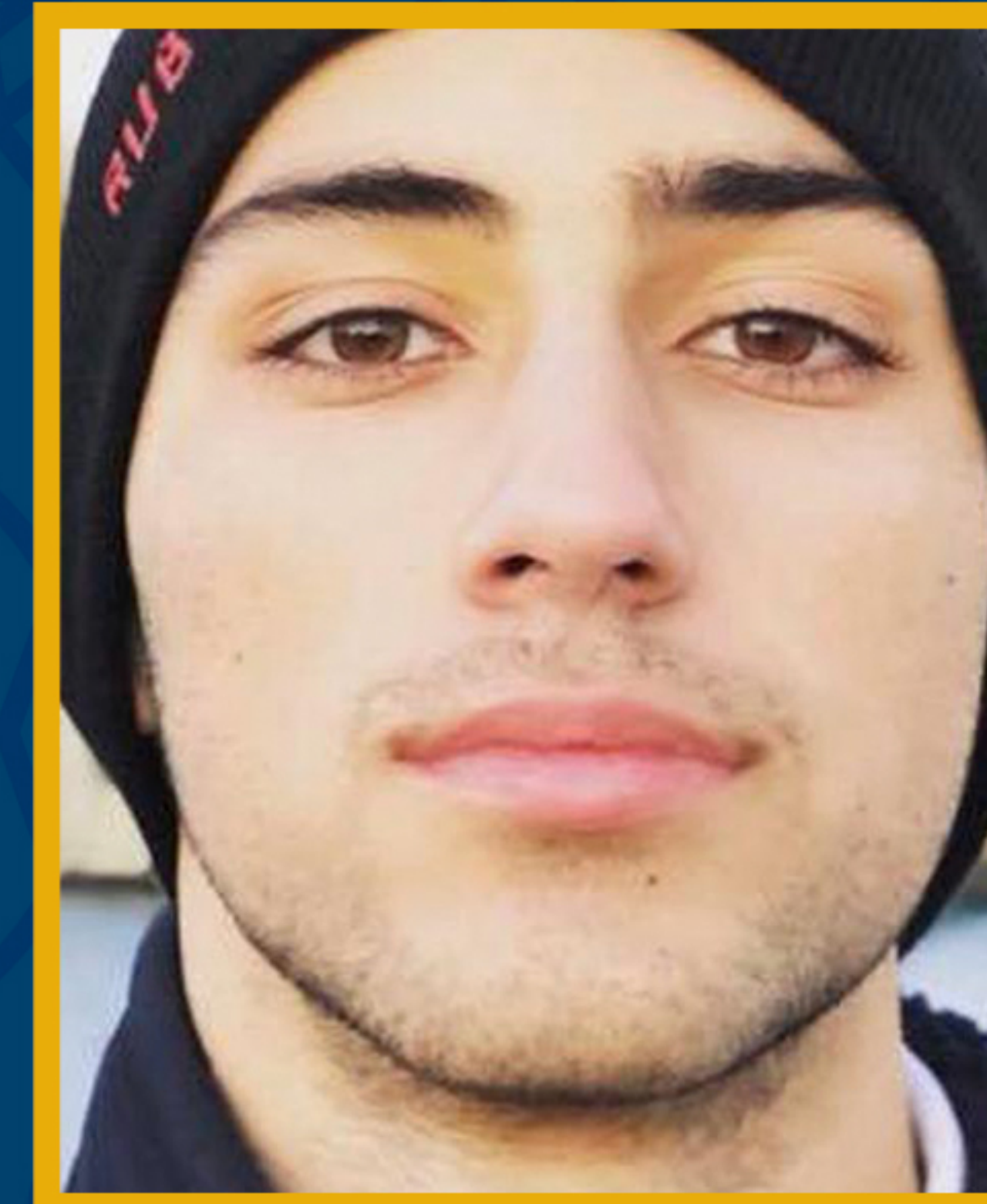
Luke Hoyer



Cara Loughran



Gina Montalto



Joaquin Oliver



Alaina Petty



Meadow Pollack



Helena Ramsay



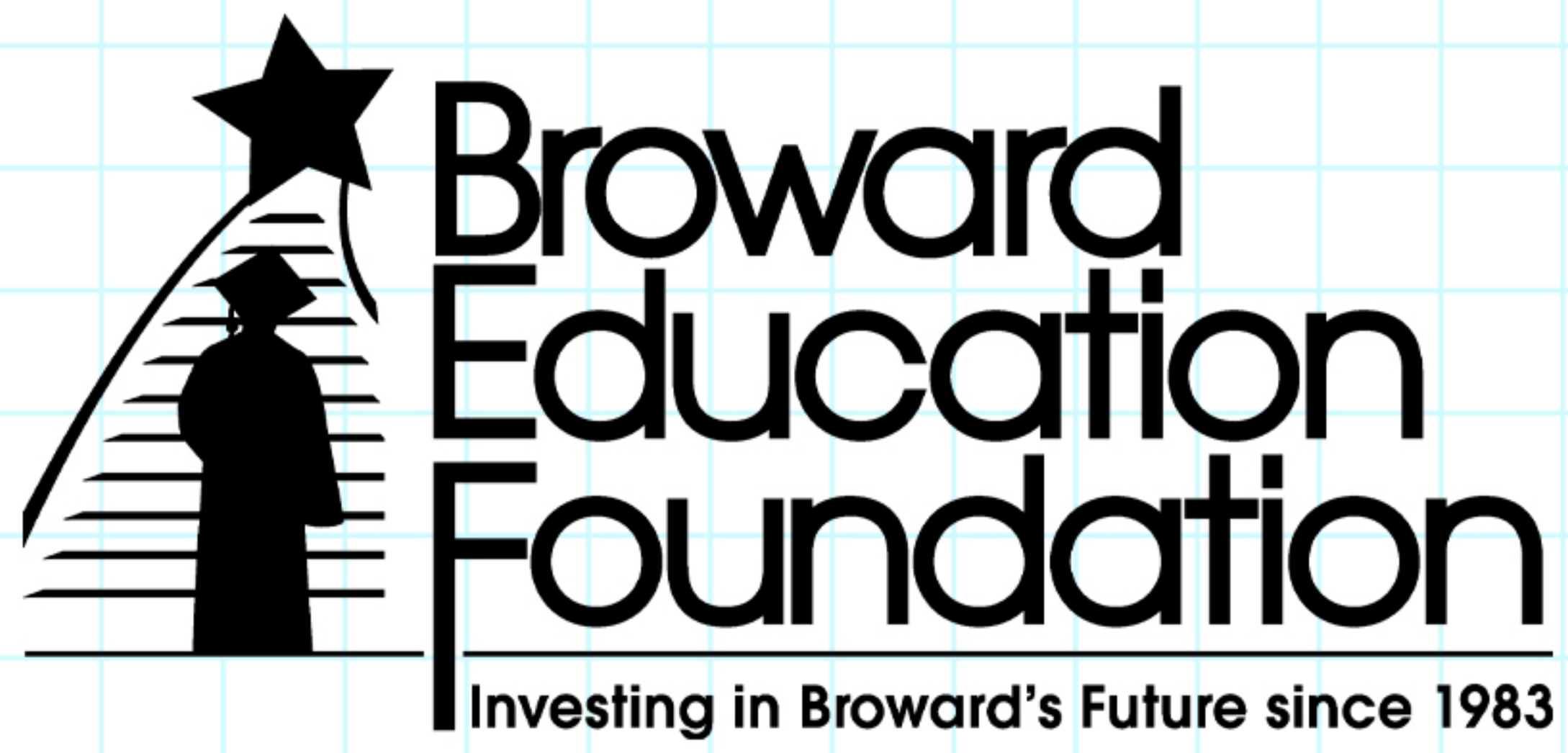
Alex Schachter



Carmen Schentrup



Peter Wang



An investment in education pays the best dividends.



FUND AN INNOVATIVE TEACHER GRANT



HOST A BACK-TO-SCHOOL SUPPLY DRIVE

JOIN US!



CREATE A SCHOLARSHIP



Broward Education Foundation ~ 600 SE Third Avenue, 1st Floor • Ft. Lauderdale, FL 33301
754.321.2030 • browardeducationfoundation.org • BEInfo@browardschools.com