



# 2022-23 IMPACT REPORT





## MISSION

Broward Education Foundation mobilizes the extended community to increase advocacy and financial support to impact student achievement.



## VISION

Broward Education Foundation envisions a community where all students and teachers in Broward County Public Schools can achieve their highest potential and succeed.



Broward Education Foundation is proven agile, adept and responsive to shifting needs in education and our community.

Dear Friends,

Thank you for sharing our dedication and commitment to maximizing the quality of education in Broward County Public Schools.

From hosting the Foundation's Broward Teachers Union Innovative Teacher IDEA EXPO presented by Office Depot at Ft. Lauderdale High School... from providing much-needed school supplies to teachers shopping twice a year at no cost for their classrooms in the Foundation's School Supply Center...and from hosting virtual Scholarship donor meet & greets to offering a "drive-up" dormitory package event for scholarship recipients experiencing housing insecurity, Broward Education Foundation delivered their three core focus areas for students and teachers in Broward County Public Schools.

"FALL MEANS FOOTBALL" and Broward Education Foundation proudly presented the first-ever Athletic Arm, the Broward County High School Football National Showcase, which took place in August. Seven local high schools played seven of the top-ranked high schools in the country.

Continuing to reimagine Broward Education Foundation's two signature fundraising events, the Publix Super Markets Charities 10th Annual Hall of Fame Awards, presented by Memorial Healthcare System, honors seven outstanding Broward County Public School alumni to the BrightStar Credit Union GREASE LIGHTNIN' presented by Office Depot at Margaritaville in May, manifested another banner year, with your help, for the students and teachers we serve in Broward County Public Schools.

But the number one ingredient in Broward Education Foundation's success is YOU. None of the mixing, blending, shaking, and stirring to deliver vital support to students and teachers in Broward Schools is possible without your engagement and dedication to quality public school education.

For that, we humbly and sincerely offer our thanks to you. We couldn't do what we do without YOU.

Well done!



*Jean M. McIntyre*  
**Jean McIntyre**  
Board Chair 2022-23



*Shea Ciriago*  
**Shea Ciriago**  
Chief Executive Officer

# 2023 Hall of Fame Inductees



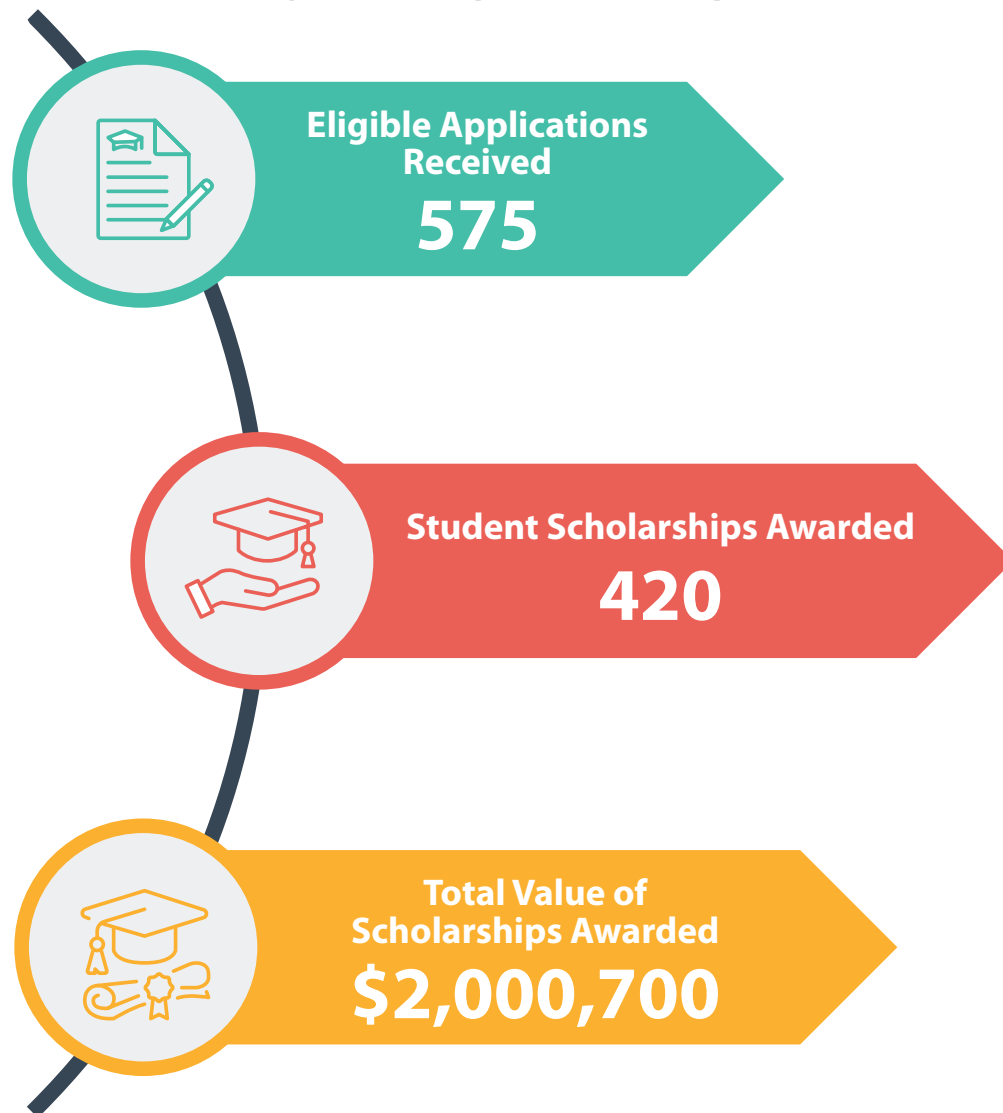
## STUDENT SCHOLARSHIPS

Broward Education Foundation stewards scholarships for qualified graduating students in Broward County Public Schools. Scholarship awards are based on unmet needs, as well as merit and academic achievement. Thanks to the generous donors like Community Foundation of Broward and Florida Prepaid College Foundation, students pursuing a university, college or vocational education receive awards ranging from \$1,000 to four-year scholarships.

Availability to create a Scholarship Endowment and/or Estate Plan to keep your Honor and Memorial Scholarships cemented in the Foundation designated to BCPS graduating seniors and securing Broward's future Educational success for generations!



# 2022-23 IMPACT

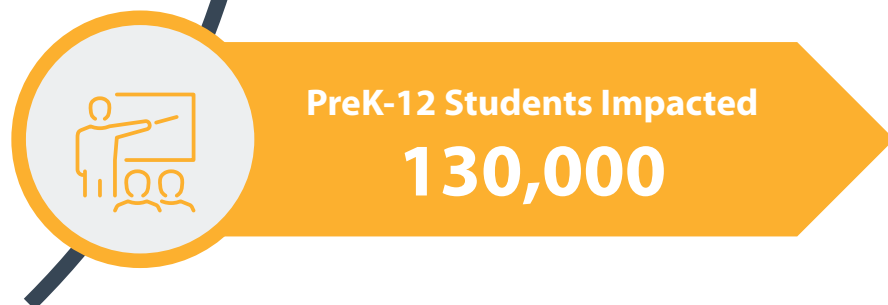


## SCHOOL SUPPLIES

Broward Education Foundation’s School Supply Center equips students for success by providing free school supplies for children in need. Through a collaborative partnership with Kids in Need Foundation and tremendous support from business and community leaders, educators in schools serving a high percentage of economically disadvantaged students shop free for students and classrooms.



# 2022-23 IMPACT

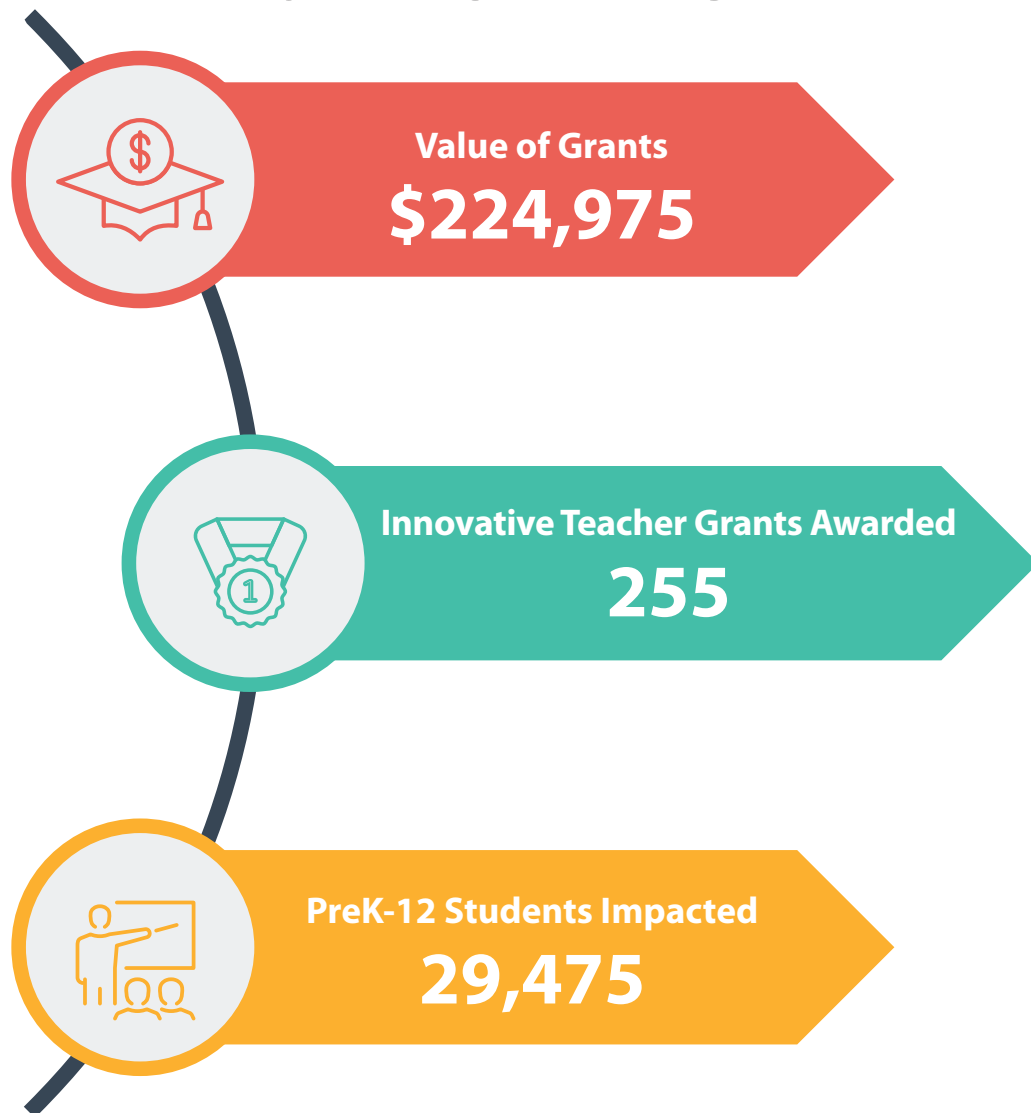


## INNOVATIVE TEACHER GRANTS

Broward Education Foundation fosters innovative teachers with grants to help them develop and fund engaging curriculum that positively increases PreK- 12 learning outcomes. With a multi-faceted “best practices” model, Innovative Teachers are recognized for their ingenuity, their classrooms benefit from additional grant funding and their peers replicate, enhance and build upon proven methods of academic achievement.



# 2022-23 IMPACT

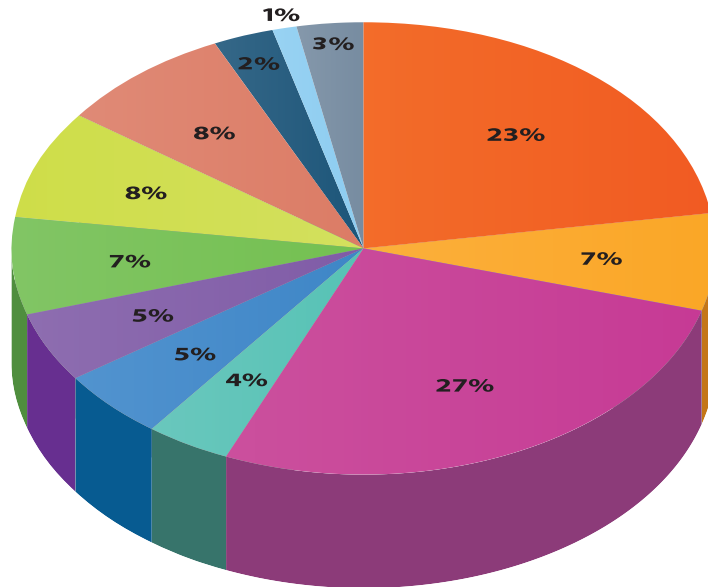


# Annual Themed Event





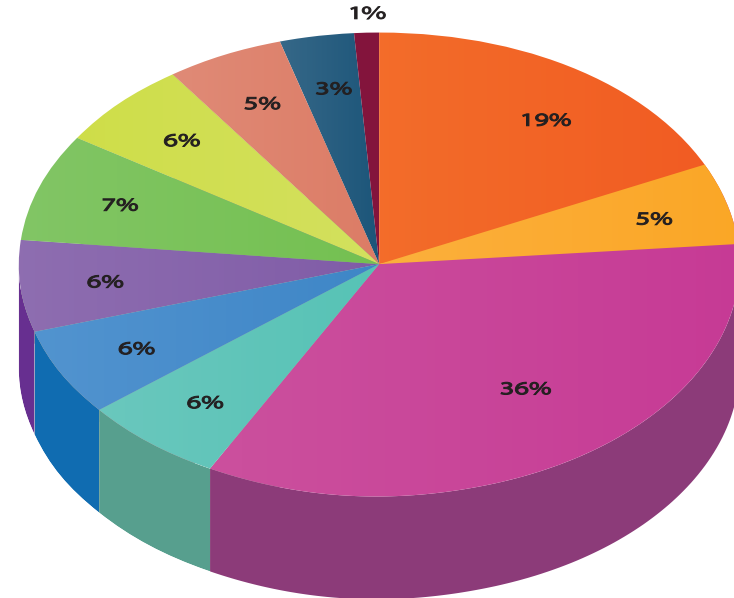
## REVENUE



- Scholarship Program - \$1,662,197 - 23%
- School Supply Center Program - \$543,003- 7%
- Contributed School Supplies - \$1,962,600 - 27%
- General Administration - \$268,582 - 4%
- Contributed Facilities, Utilities, Salaries, and Benefits - \$362,556 - 5%
- Athletics Program - \$358,695 - 5%
- Other Programs - \$533,636 - 7%
- Innovative Teaching Program - \$586,774 - 8%
- Fundraising/Special Events - \$559,857 - 8%
- Contributed Fundraising/Special Events - \$190,569 - 2%
- Charges for Services - \$84,865 - 1%
- Investment Earnings (loss) - \$235,666 - 3%

**\$7,349,000**

## EXPENSES



- Scholarship Program - \$1,171,450 - 19%
- School Supply Center Program - \$312,689 - 5%
- Contributed School Supplies - \$2,173,503 - 36%
- General Administration - \$354,335 - 6%
- Contributed Facilities, Utilities, and Salaries - \$362,556 - 6%
- Athletics Program - \$354,696 - 6%
- Other Programs - \$436,120 - 7%
- Innovative Teaching Program - \$352,526 - 6%
- Fundraising/Special Events - \$283,497 - 5%
- Contributed Fundraising/Special Events - \$190,569 - 3%
- Debt Service - \$47,962 - 1%

**\$6,039,903**

# BROWARD EDUCATION FOUNDATION Annual Giving 2022-23

## \$500,000 +

Consortium of Florida  
Education Foundations  
Frederick A. DeLuca Foundation

## \$100,000- \$499,999

BrightStar Credit Union\*  
Broward County Public Schools-  
Education First Employee Giving  
Community Foundation of Broward  
Jazwares\*  
Kids In Need Foundation\*  
Nextera Energy Foundation, Inc.  
Office Depot\*  
Publix Super Markets, Inc.\*  
School Board of Broward County\*  
Sydney & Grace Selinger Education  
Trust  
United National Consumer  
Supplier\*  
Wilton Manors Kiwanis

## \$50,000 - \$99,999

Aetna  
AutoNation  
Broward Health\*  
Dave & Busters, Inc.\*  
Five Below\*  
Harry T. Mangurian, Jr.  
Foundation, Inc.  
Scholastic Books\*  
State of Florida- Support  
Education License Tag  
Yoobi\*

## \$25,000 - \$49,999

A Gift For Teaching - Orlando\*  
ASC American-Sun Components\*  
Broward Teachers Union\*  
Greater Fort Lauderdale CVB  
Memorial Healthcare System\*  
Rotary Club of Weston

## \$10,000 - \$24,999

Amazon\*  
Arthur J. Gallagher  
Risk Management Services

Broward Sheriff's Office –  
Pompano Beach\*  
C.N. McCune Scholarship Fund  
Children's Services Council  
City of Hallandale Beach  
City of Hollywood  
City of Pompano Beach  
Coke Florida  
Brian Ellis  
Fellowship of Christian Athletes  
HG Charitable Foundation  
Humana  
JM Family Enterprises, Inc.  
Lego Construction\*  
Mahi Shriners  
MetLife Life Insurance Company  
Miami Dolphins  
Moss Construction  
MTB Metals / MKS Pamp Group  
Paragon Marketing Group  
Pediatric Associates\*  
Pettineo Insurance Agency, Inc.  
Prep Gridiron Logistics  
Publix Super Markets Charities  
PUPIL - People Uplifting People In Life  
Drs. Subhash and Vasanti Puranik  
Rockefeller Philanthropy Advisors  
Stephanie Sue Ann Tsakis Living Trust  
Ultimate Kronos Group\*  
Zully Vergal\*

## \$5,000 - \$9,999

Alan Joseph Levy Memorial  
Scholarship Fund  
Bank of America  
Charitable Foundation  
BBX Capital  
Bencor  
Bru's Buddies, Inc.  
Carriuolo Family Foundation Inc.  
Frank Cerisano  
Corradino Group  
The GEO Group Foundation  
Moss Construction  
Jay Davidson\*  
Brenda K. Francis  
Johns Eastern Company, Inc.  
JP Sports + Entertainment, Inc.\*  
Mutual of Omaha  
Safelite Auto Glass  
Carol Showker  
Sistrunk Historical Festival, Inc.

State Farm Insurance Companies  
Upchurch Management Co., Inc.  
Zolaryx\*

## \$1,000 - \$4,999

ActionPAKT\*  
Aecom  
Aflac - Plantation\*  
AXA Equitable  
B & I Contractors\*  
Bank of America\*  
Benevity  
Camden Property Trust – Ft.  
Lauderdale\*  
Harmony Development Center, Inc.  
Joyce Carnovale  
Centennial Bank\*  
Charles Rutenberg Realty, LLC\*  
Charter Holdings Foundation, Inc.  
Rep. Chip Lamarca  
Cleveland Clinic Florida\*  
Susan A. Colton  
Cypress Corporate Center, LLC\*  
Amber & Jammal Davenport  
Elegant Occasions\*  
Ken Ellman\*  
Equitable Distributors, LLC  
Vikki E. Evers  
Excel Construction\*  
Experian  
FDOT Florida's Turnpike Ent.-  
Pompano\*  
FirstService Residential - Hollywood\*  
Forecast Trading Corporation\*  
Cary Garlinghouse\*  
Garth Solutions  
Glantz Law\*  
Patricia and Tom Good  
Grover Corlew of Florida, LLC  
Jorge Gutierrez  
Melissa Hayman  
Heico\*  
HITT Contracting\*  
IBI Group\*  
JPMorgan Chase Foundation  
Junior Achievement  
of South Florida, Inc.  
Kids Deserve It All, Inc.\*  
Lewis Brisbois Bisgaard & Smith, LLP\*  
Lions Club of Fort Lauderdale  
Colleen Lockwood  
Jacqueline Martinez  
Meridian Partners, LLC  
Paige Moffat

Nova Animal Hospital  
Parkside Elementary School  
Percell Marc Maynor  
Memorial Scholarship, Inc  
Matt Pitts  
Ryan Reavis  
Regions Bank  
Kim Sanecki  
SCI Direct\*  
Soroptimist International\*  
Space Coast Credit Union\*  
Stifel Trust Foundation  
Cindy Stoddart Cooper  
Christina Stone-Guillen\*  
Suhood's Select, LLC\*  
Sysco Corporation  
TASC  
Teva / Actavis\*  
Tropical Smoothie Cafe\*  
Charter Holdings Foundation, Inc.  
W Hotel\*  
William R. Nash, LLC  
Douglas Wilson  
Wooster & Halpern, PA\*

## \$500 - \$999

Butterfly Effects, LLC\*  
Patricia Capel\*  
CarMax - Pompano Beach\*  
Centennial Bank\*  
City Furniture  
Colliers International WA  
Cherie Deering  
Zoila A. Delmonte  
Mary Destasio  
FDOT - Commercial Blvd\*  
Laura Geary  
Wanda Haynes  
Heritage Property & Consulting\*  
In The Game - Sawgrass\*  
Invitation Homes\*  
A.J. Jabre  
Jeremiah's Italian Ice\*  
Ladies of St. John Evangelist Church\*  
Eduardo Lloset  
Roman Maciag  
Mager Paruas, LLC\*  
Jamie Manburg, Ed.D.  
Jean McIntyre  
Maribel Miller  
Museum of Discovery & Science  
National Employee Benefits  
Administrators, Inc.\*  
Neiman Marcus Group Warehouse\*  
Network For Good

NSU - College of Optometry\*  
OneBlood  
Playa Hotel & Resorts\*  
Port Everglades Association  
Quality Education For Minorities  
Network  
Redline Media Group\*  
South Florida Flag Football League\*  
Steiger, Greene & Feiner\*  
Strive Learning Solutions, LLC\*

## In-Kind Service Donations

BECON  
Message Makers  
PC Studios

*\* Includes in-kind product donations  
and/or cash contributions*





Chair  
**Jean McIntyre**  
Pompano Beach  
Chamber of Commerce



Chair-Elect  
**Dustin Jacobs**  
BrightStar  
Credit Union



Secretary  
**Myriam Goldman**  
Harmony Development  
Center, Inc.



Treasurer  
**Ric Green**  
Retired



Past Chair  
**Tim Curtin**  
Memorial  
Healthcare System

### BOARD OF DIRECTORS

Chair  
**Jean McIntyre**  
Pompano Beach Chamber of  
Commerce

Chair-Elect  
**Dustin Jacobs**  
BrightStar Credit Union

Treasurer  
**Ric Green**  
Retired

Secretary  
**Myriam Goldman**  
Harmony Development Center, Inc.

Past Chair  
**Tim Curtin**  
Memorial Healthcare System

**Alfredo Aguirre**  
Merrill Lynch, Pierce,  
Fenner & Smith Inc.

**Ruth Carter-Lynch**  
Florida Consortium of Public  
Charter Schools

**Margarita Castellon**  
Community Advocate

**Sue Colton**  
Author/Educator

**Christina Fischer**  
The Fischer Group

**Sharon Glickman, Esq.**  
Broward Teachers Union

**Stephanie Grutman**  
Grutman Group

**Debra Hixon**  
School Board of Broward County

**Frank Horkey**  
Horkey and Associates, P.A.

**Wilnar Julmiste, Esq.**  
Julmiste Law

**Jamie Manburg, Ed.D.**  
Nova Southeastern University

**Burt Miller**  
Broward County Council PTA/PTSA

**Alex Price**  
Office Depot

**Kathryn Salerno**  
Broward Health

**Dr. Earlean C. Smiley**  
Interim Superintendent,  
Broward Schools

**Charles Verner**  
UBS Financial Services

**Dionne Wong**  
Baptist Health

**Dr. Allen Zeman**  
School Board of Broward County

\*Emeritus  
**Dr. Dorothy Orr**  
Community Advocate

### BROWARD EDUCATION FOUNDATION TEAM

**Shea Ciriago**  
CEO

**James A. Knapp**  
COO

**Liz Reynolds**  
CFO

**Franklin Adams**  
Warehouse Supervisor

**Kyle Barfield**  
Administrative & Web  
Marketing Coordinator

**Mari-Lee Baxter**  
Program Director

**Coco Burns**  
Program Director

**Hector Javier**  
School Supply Center Manager

**Claudette Lavoie**  
Program Director

**Carol McFadden**  
Accounts Payable Specialist

# Will YOU join us in maximizing the quality of education for students in Broward County Public Schools?



**Fund an Innovative  
Teacher Grant**



**Host a Back-To-School  
Supply Drive**



**Create a Scholarship**



**Broward Education Foundation • 600 SE Third Avenue, 1st Floor • Fort Lauderdale, FL 33301**

 **754.321.2030**  **browardedfoundation.org**  **befinfo@browardschools.com**